

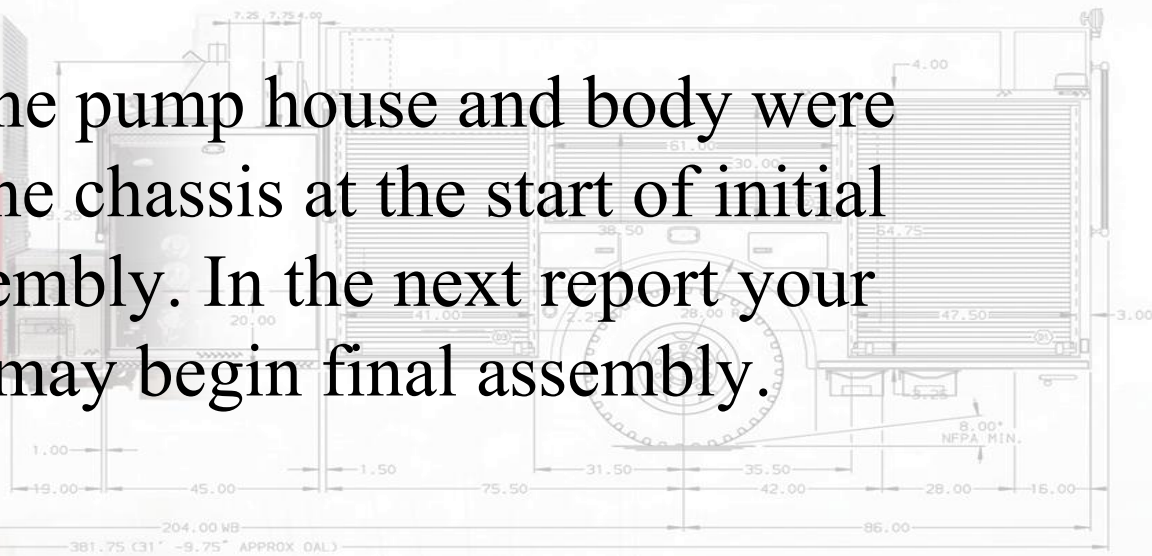
# In-Production Photo Report for

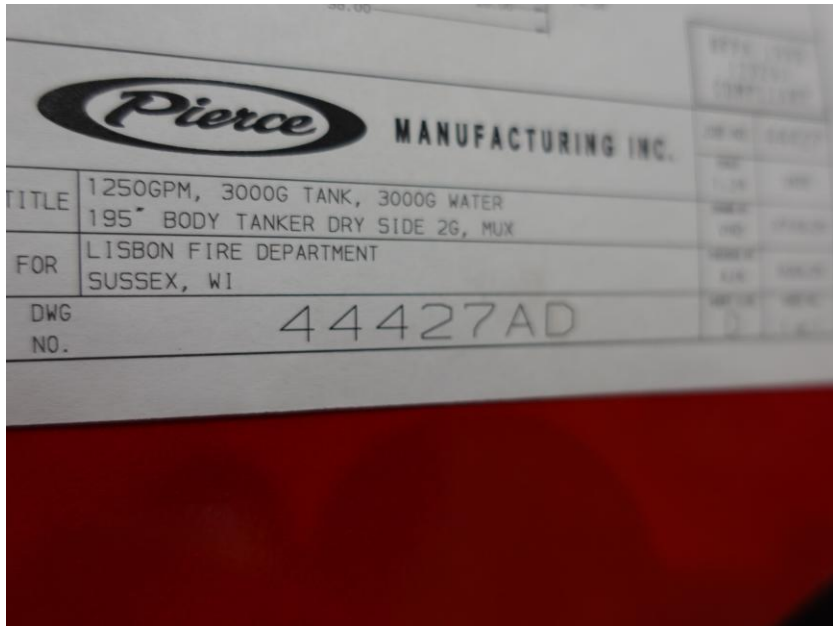
Lisbon, WI

Job# 44427 : PWO# 34384374

Status as of April 17, 2026

In this report the pump house and body were merged with the chassis at the start of initial apparatus assembly. In the next report your apparatus may begin final assembly.

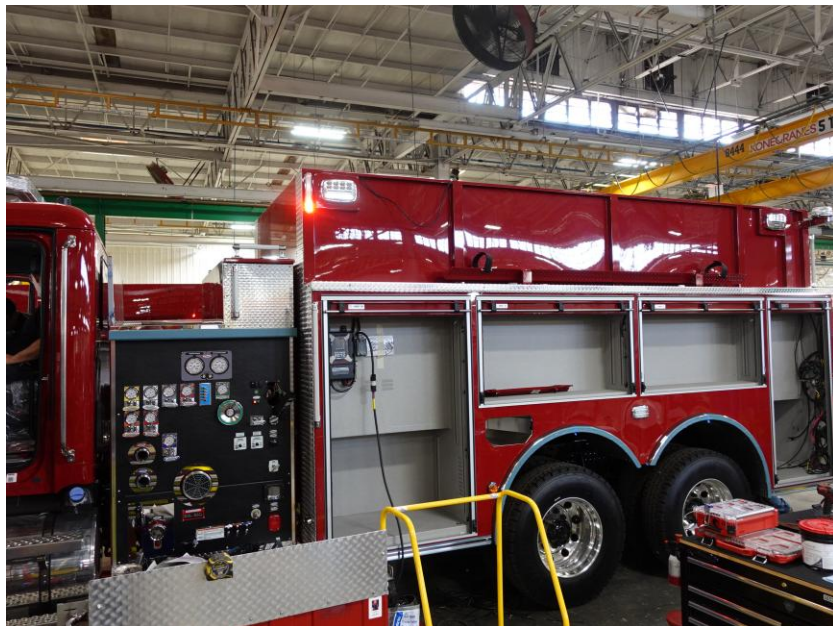




DSC07108



DSC07109



DSC07110



DSC07111



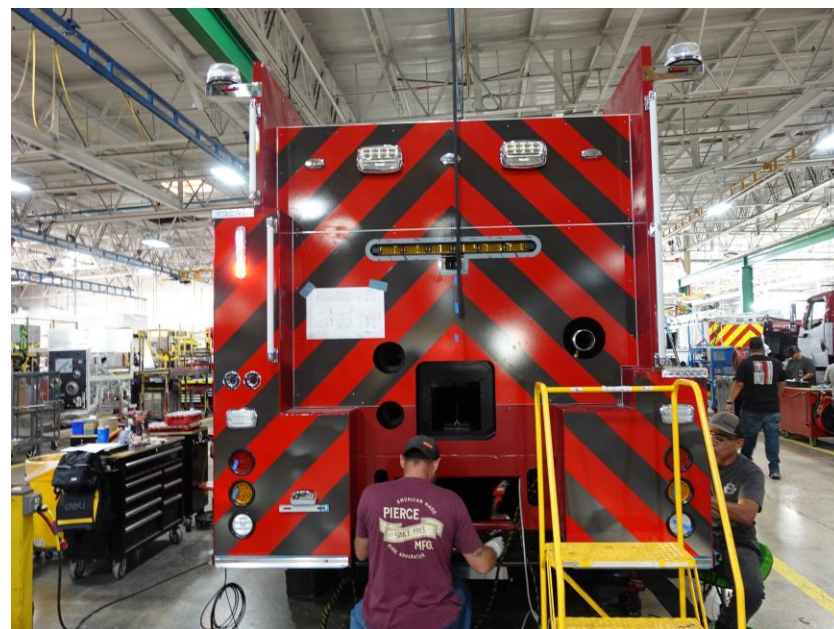
DSC07112



DSC07113



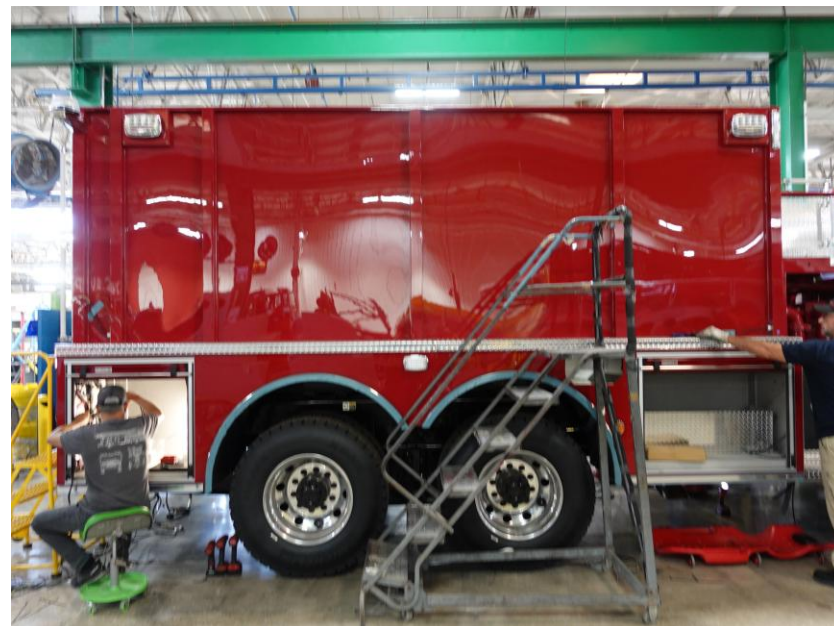
DSC07114



DSC07115



DSC07116



DSC07117



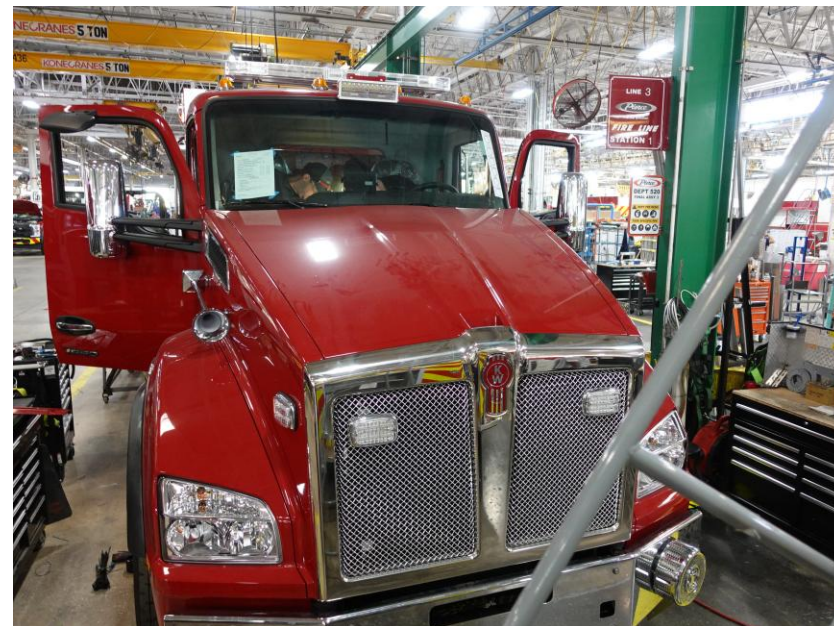
DSC07118



DSC07119



DSC07120



DSC07121



<https://reliantfire.com/>



An Oshkosh Corporation Company