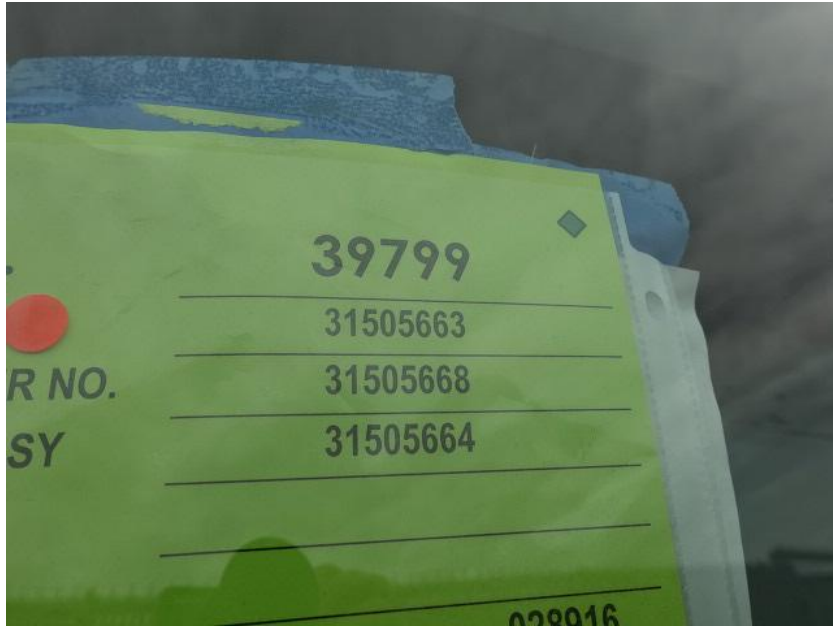


# In-Production Photo Report for LaCrosse Fire Department, WI Job# 39799

Status as of November 07, 2025

In this report your cab completed initial assembly and was merged with the frame while the body completed initial assembly. In the next report the body may be merged with the chassis at the start of initial apparatus assembly.





DSC00019



DSC00020



DSC00021



DSC00022



DSC00023



DSC00024



DSC00025



DSC00026



DSC00027



DSC00028



DSC00029



DSC00030



DSC00031



DSC00032



DSC00033



DSC00502



DSC00503



DSC00504



DSC00505



DSC00506



<https://reliantfire.com/>



An Oshkosh Corporation Company