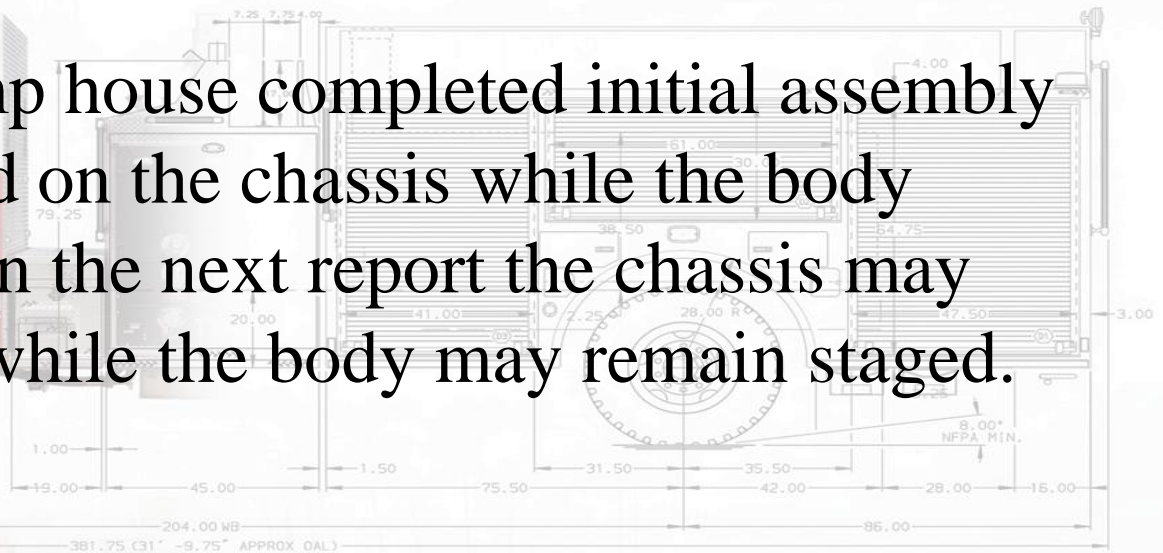


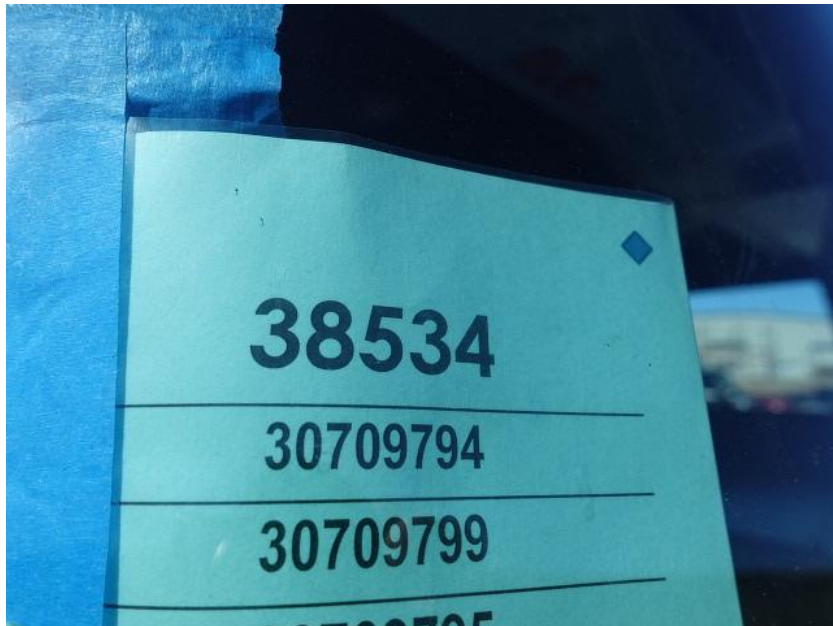
Status as of March 07, 2025

In this report the pump house completed initial assembly and was installed on the chassis while the body remained staged. In the next report the chassis may continue assembly while the body may remain staged.



For valued customers of





DSC01077



DSC01078



DSC01079



DSC01080



DSC01081



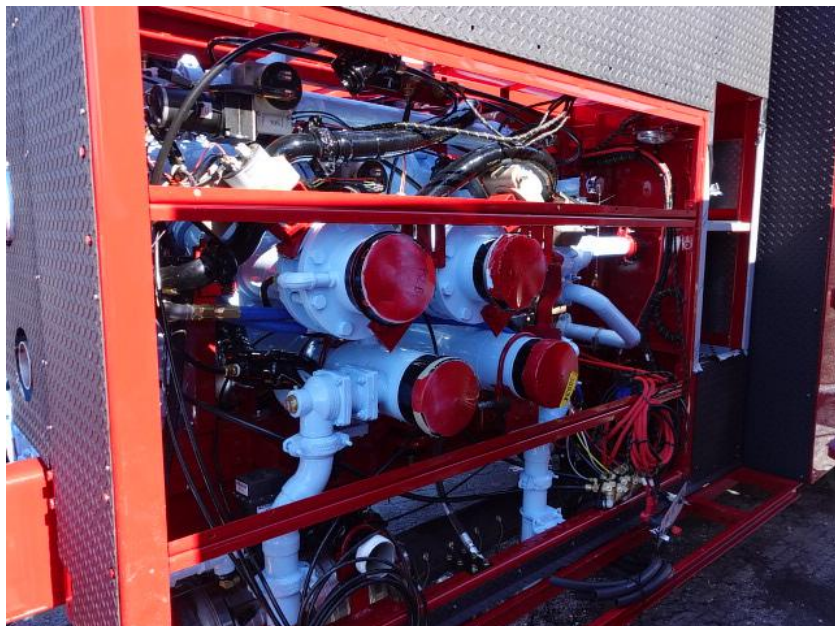
DSC01082



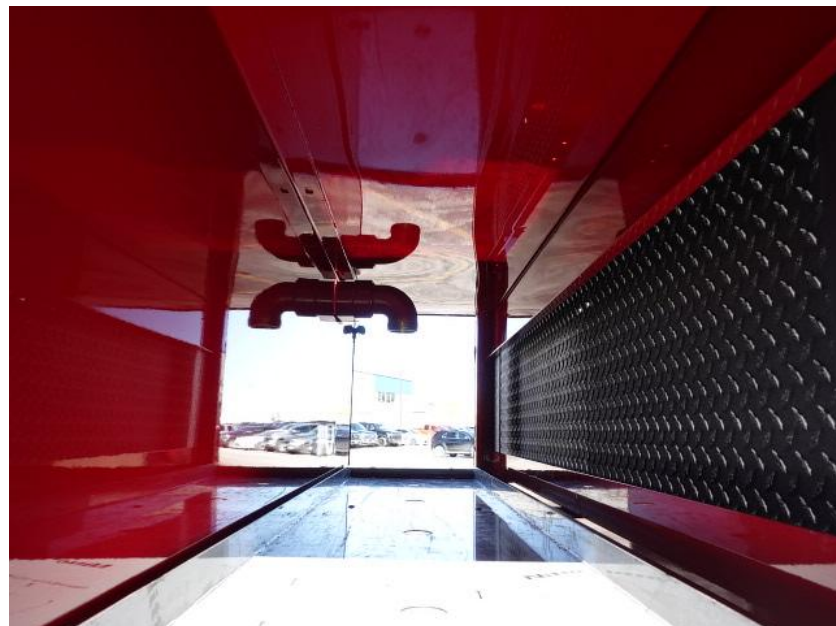
DSC01083



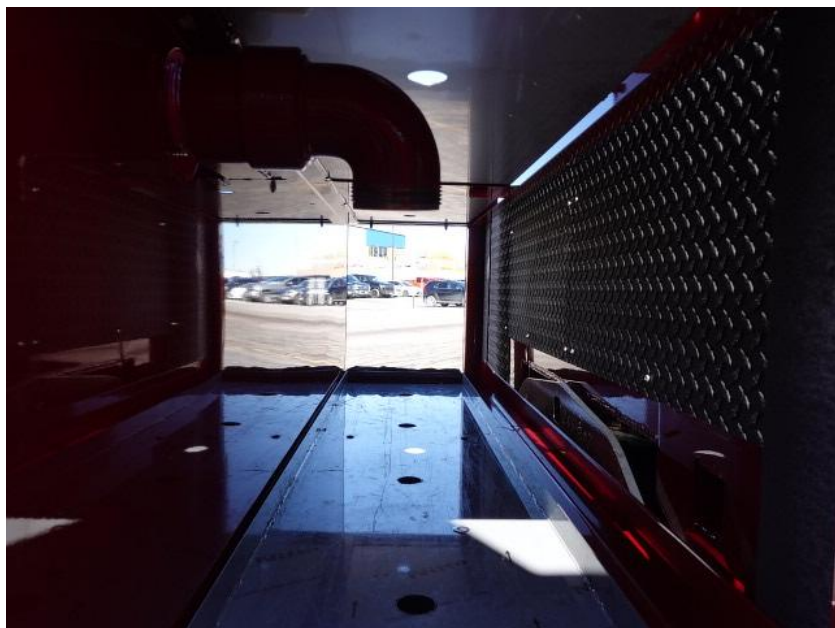
DSC01084



DSC01085



DSC01086



DSC01087



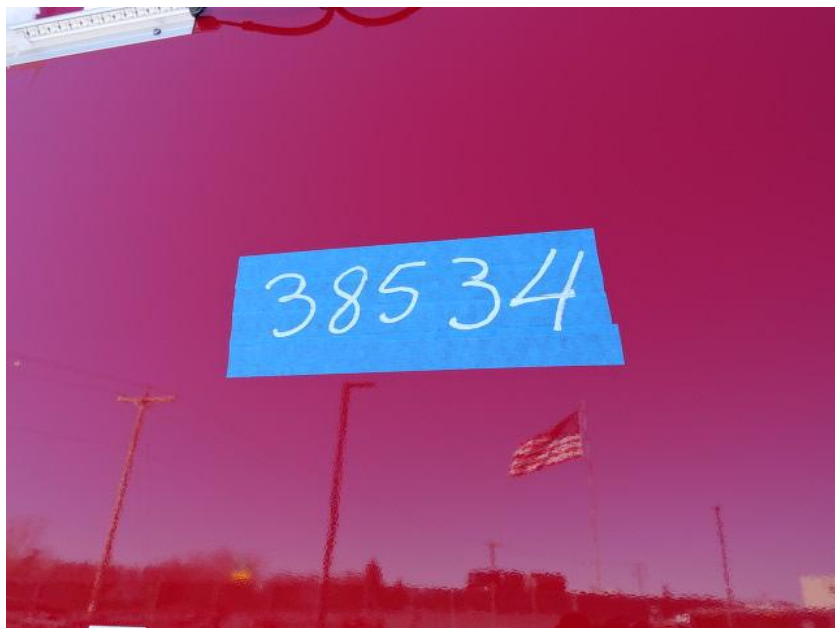
DSC01088



DSC01089



DSC01090



DSC01043



DSC01044



DSC01045



DSC01046



DSC01047