

In-Production Photo Report for City of Grand Rapids Fire Department, MI Job# 42508

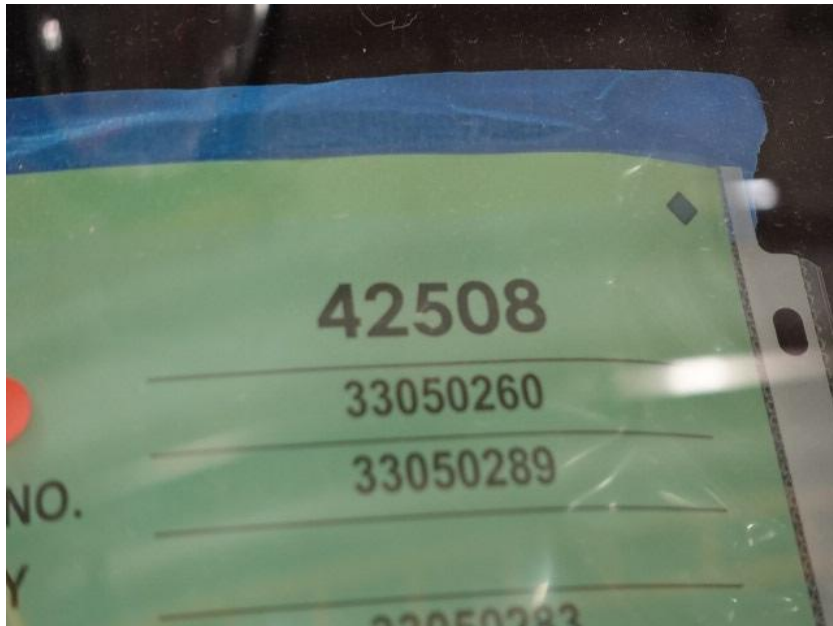
Status as of May 02, 2025

In this report your cab, pump house, torque box, and rear body module were merged with the frame at the start of initial apparatus assembly while the turntable module began initial assembly, and the aerial device remained staged. In the next report the turntable module may be installed followed by the start of final assembly, and the aerial device may remain staged to begin initial assembly.



For valued customers of





DSC03666



DSC03667



DSC03668



DSC03669



DSC03670



DSC03671



DSC03672



DSC03673



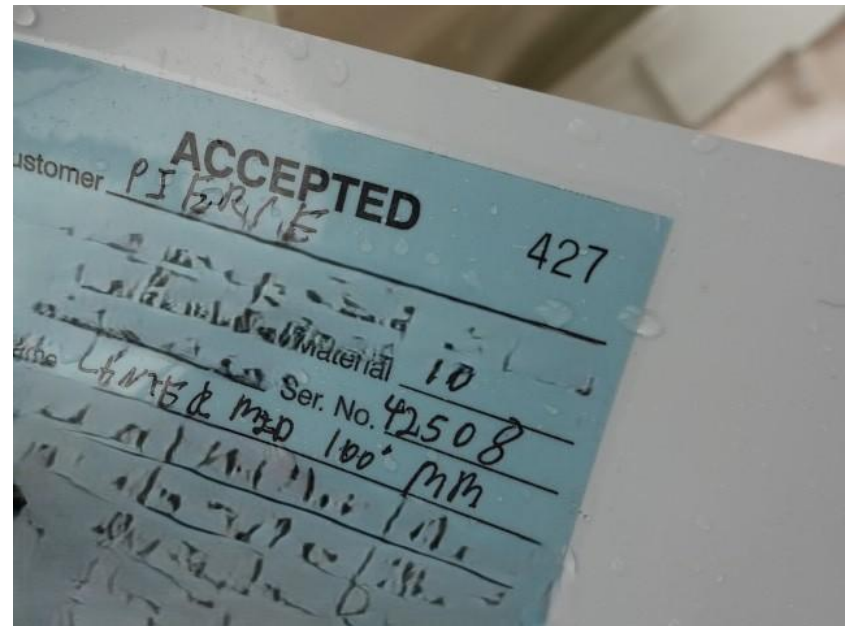
DSC03424



DSC03425



DSC03426



DSC03786



DSC03787



DSC03788



DSC03789