

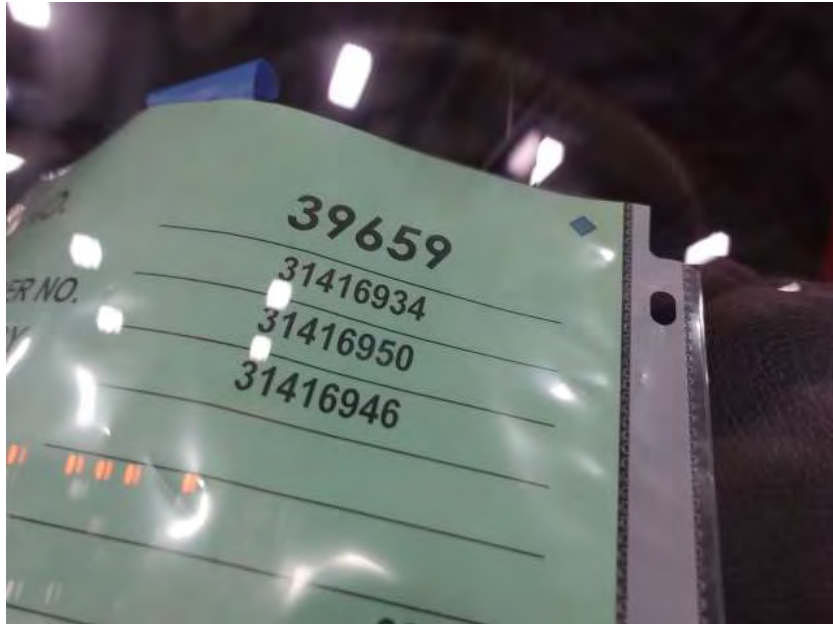
In-Production Photo Report for Mount Horeb Fire Department, WI Job# 39659

Status as of February 28, 2025

In this report your apparatus completed test and released to quality and graphics where any remaining content is applied.

Once finished it will be made ready for your customer acceptance inspection. This is your last scheduled report.





DSC01662



DSC01663



DSC01664



DSC01665



DSC01666



DSC01667



DSC01668



DSC01669



DSC01670



DSC01671

Pierce
 Manufactured by: Pierce Manufacturing, Inc.
 - Custom Designed and Manufactured Exclusively For -
MOUNT HOREB AREA JOINT FIRE DISTRICT

DeKohr Corporation
 VEHICLE EMISSION
 CONTROL INFORMATION
 Vehicle Family: RO5H2000001
 Sub-Category: Emergency Vehicle
 THIS VEHICLE COMPLIES WITH U.S.
 EPA REGULATIONS FOR 2024 MODEL
 YEAR HEAVY-DUTY VEHICLES. THIS
 VEHICLE WAS CERTIFIED AS AN
 EMERGENCY VEHICLE UNDER 40 CFR
 1037.105(f).

Mo./Yr of Mfg	Feb - 2025	Job No.	39859	WO No.	31416934
GVWR	32,115 KG (70,800 LB)	Tire-Limited Max Speed	66 mph	Chassis	Quantum
GAWR		TIRES		RIMS	COLD TIRE INFLATION
Front	10,342 KG (22,800 LB)	425/65R22.5 (L)		22.50x12.25	827 kPa (120 PSI) SINGLE
Rear	21,773 KG (48,000 LB)	12R22.5 (H)		22.50x9.00	723 kPa (105 PSI) DUAL

THIS VEHICLE CONFORMS TO ALL APPLICABLE U.S. FEDERAL MOTOR VEHICLE SAFETY STANDARDS IN EFFECT ON THE DATE OF MANUFACTURE SHOWN ABOVE.

VIN	4P1BAAGF5RA027571	TYPE	Emergency Vehicle
CUSTOM HIGH GRADE PAINT FINISH			
Black	Pierce No. 101	Sikkens Autocoat 8TLV Basecoat	FLNA40119
None	Pierce No. 0	NA	NA

FLUID CAPACITIES
 Verify All Fluid Capacities and Perform All Maintenance Items outlined in the Operator's Manual At The Recommended Time Intervals.

Component	Fluid Capacity		Fluid Type
Engine	42.6 Liter	45.0 Quart	15W40 CR-4
Trans	36.8 Liter	39.0 Quart	TES-448 Synthetic
Coolest	51.1 Liter	54.0 Quart	DAT ELC
Power Steering	3.8 Liter	4.0 Quart	TES-399 ATF
Front Axle			80W90 (SAE) LHM
Rear Axle (R2 or Single)	18.0 Liter	19.0 Quart	80W90 (SAE) LHM
Rear Axle (R1)	14.2 Liter	15.0 Quart	80W90 (SAE) LHM
Leaf Oil	4.7 Liter	5.0 Quart	TES-399 ATF

DSC01672



DSC01673



DSC01674



DSC01675



DSC01676



DSC01677



DSC01678



DSC01679



DSC01680



DSC01681



DSC01682



DSC01683



DSC01684



DSC01685



DSC01686



DSC01687



DSC01688



DSC01689



DSC01690



DSC01691



DSC01692



DSC01693



DSC01694



DSC01695



DSC01696



DSC01697



DSC01698



DSC01699



DSC01700



DSC01701



DSC01702



DSC01703



DSC01704



DSC01705



DSC01706



DSC01707



DSC01708



DSC01709



DSC01710



DSC01711



DSC01712



DSC01713



DSC01714



DSC01715



DSC01716



DSC01717



DSC01718



DSC01719



DSC01720



DSC01721



DSC01722



DSC01723



DSC01724



DSC01725



DSC01726



DSC01727



DSC01728



DSC01729



DSC01730



DSC01731



DSC01732



DSC01733



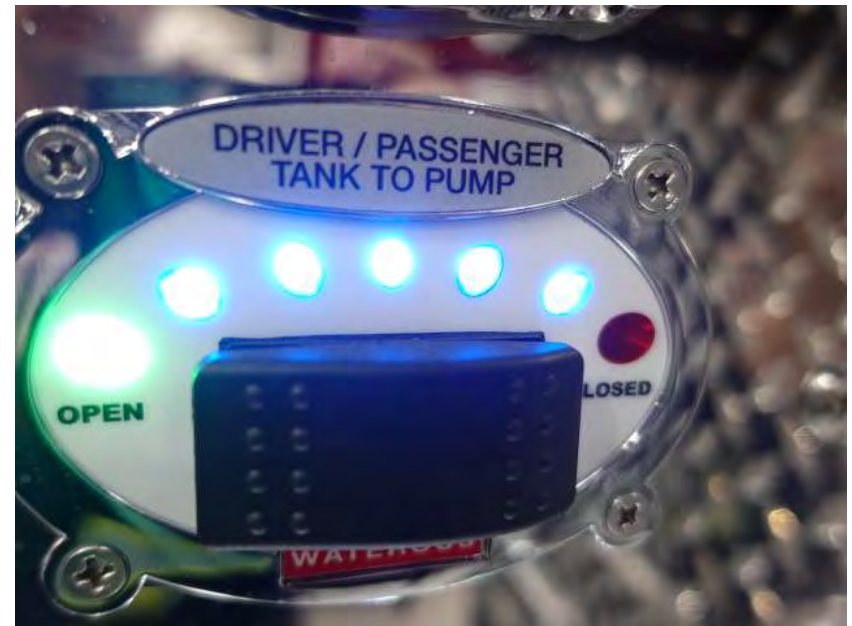
DSC01734



DSC01735



DSC01736



DSC01737



DSC01738



DSC01739



DSC01740



DSC01741



DSC01742



DSC01743



DSC01744



DSC01745



DSC01746



DSC01747



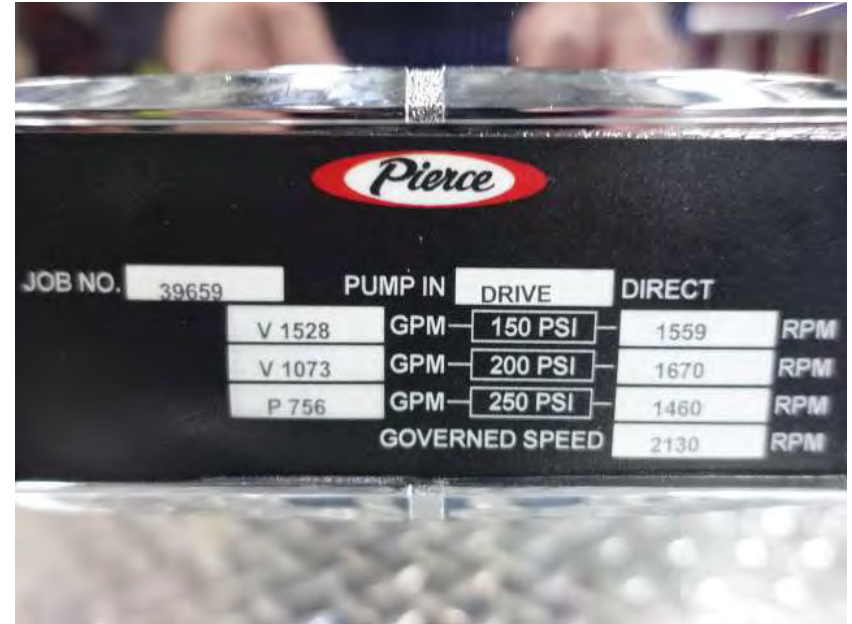
DSC01748



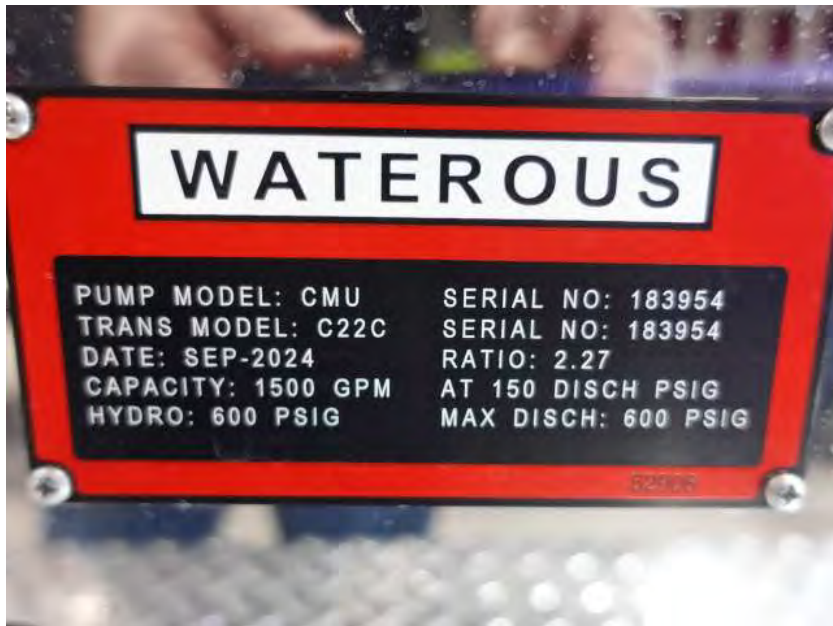
DSC01749



DSC01750



DSC01751



DSC01752



DSC01753



DSC01754



DSC01755



DSC01756



DSC01757



DSC01758



DSC01759



DSC01760



DSC01761



DSC01762



DSC01763



DSC01764



DSC01765



DSC01766



DSC01767



DSC01768



DSC01769



DSC01770



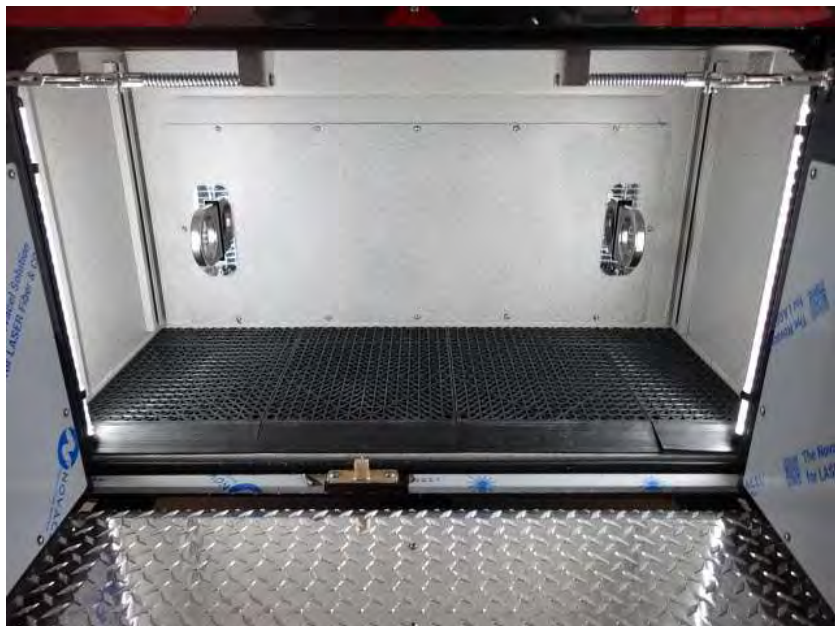
DSC01771



DSC01772



DSC01773



DSC01774



DSC01775



DSC01776



DSC01777



DSC01778



DSC01779



DSC01780



DSC01781



DSC01782



DSC01783



DSC01784



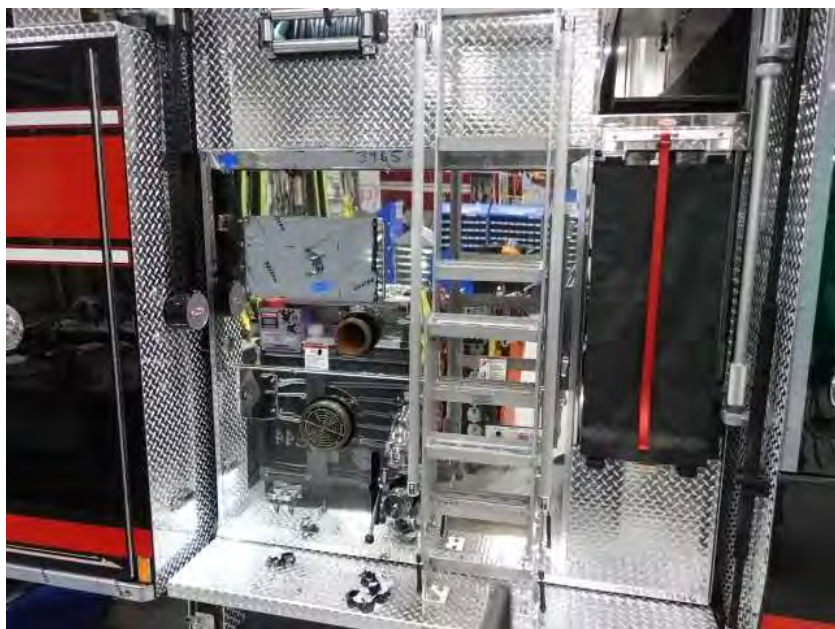
DSC01785



DSC01786



DSC01787



DSC01788



DSC01789



DSC01790



DSC01791



DSC01792



DSC01793



DSC01794



DSC01795



DSC01796



DSC01797



DSC01798



DSC01799



DSC01800



DSC01801



DSC01802



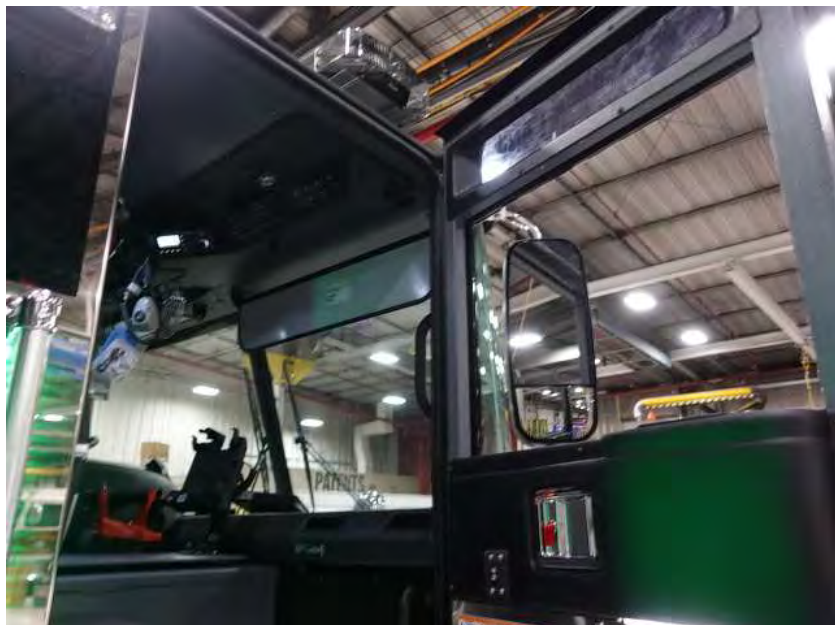
DSC01803



DSC01804



DSC01805



DSC01806



DSC01807



DSC01808



DSC01809



DSC01810



DSC01811



DSC01812



DSC01813



DSC01814



DSC01815



DSC01816



DSC01817



DSC01818



DSC01819



DSC01820



DSC01821



<https://reliantfire.com/>



An Oshkosh Corporation Company