

In-Production Photo Report for Portage Fire Department – Portage, WI Job# 39010

Status as of October 11, 2024

In this report the chassis was staged to continue assembly, the front body module remained staged, and the rear body module began initial assembly. In the next report your chassis may remain staged to continue assembly while the front body module may begin initial assembly, and the rear body module may continue initial assembly.





DSC03476



DSC03477



DSC03478



DSC03479



DSC03480



DSC03481



DSC03482



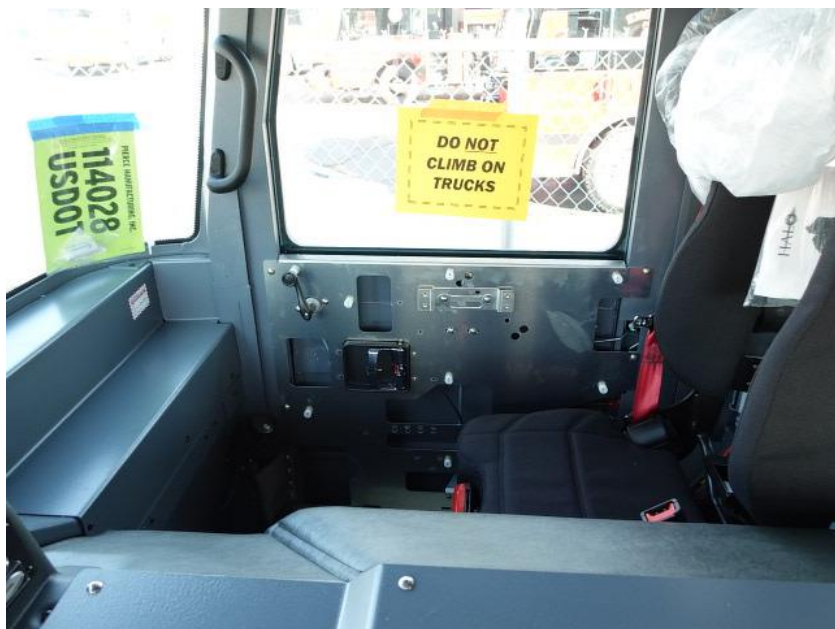
DSC03483



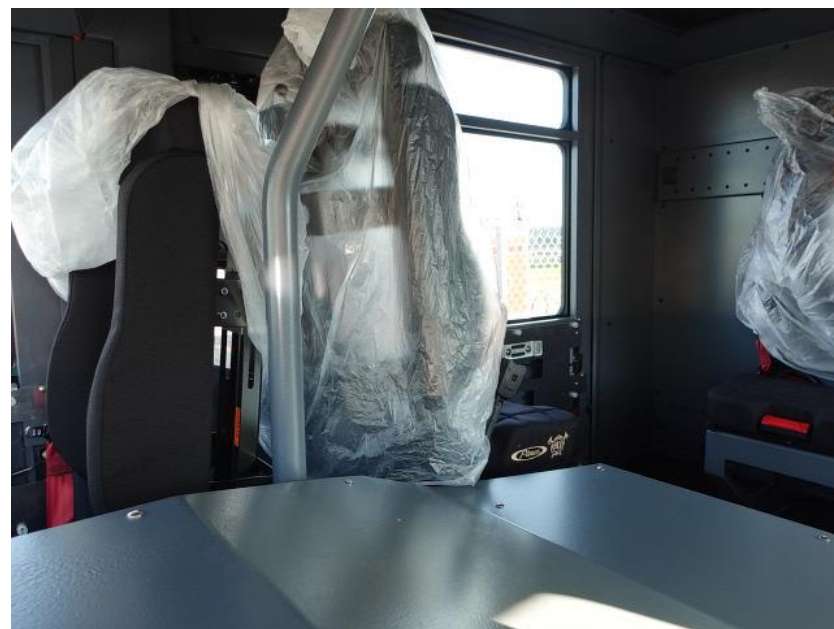
DSC03484



DSC03485



DSC03486



DSC03487



DSC03488



DSC03489



DSC03490



DSC03491



DSC03492



DSC03493



DSC03494



DSC03495



DSC03496



DSC03497



DSC03498



DSC03499



DSC03500



DSC03501



DSC03502



DSC03503



DSC03504



DSC03505



DSC03506



DSC03507



DSC03508



DSC03509



DSC03510



DSC03511



DSC03512



DSC03513



DSC03514



DSC03515



DSC03516



DSC03517



DSC03518



DSC03519



DSC03520



DSC03521



DSC03522



DSC03523



DSC03524



DSC03525



DSC03526



DSC03527



DSC03528



DSC03529



DSC03530



DSC03531



DSC03532



DSC03533



DSC03534



DSC03535



DSC03536



DSC03537



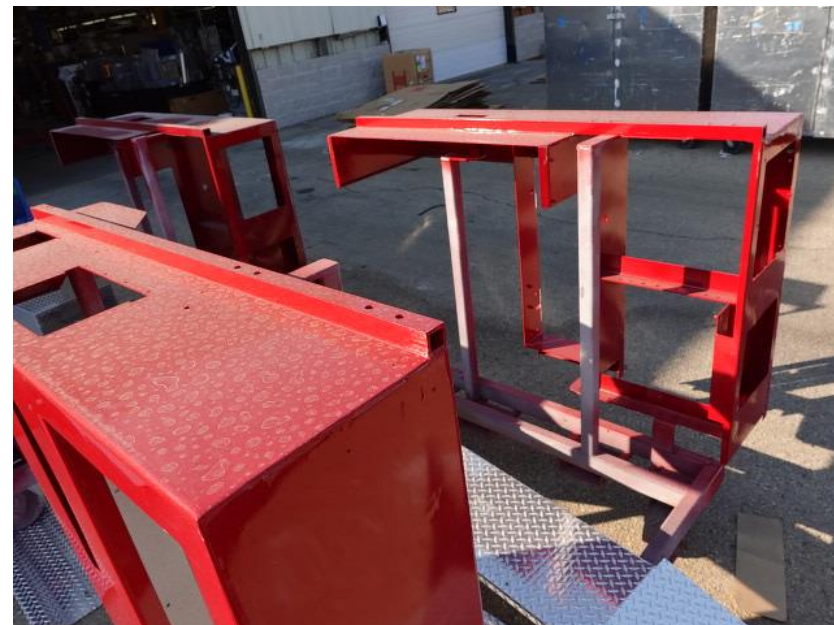
DSC03538



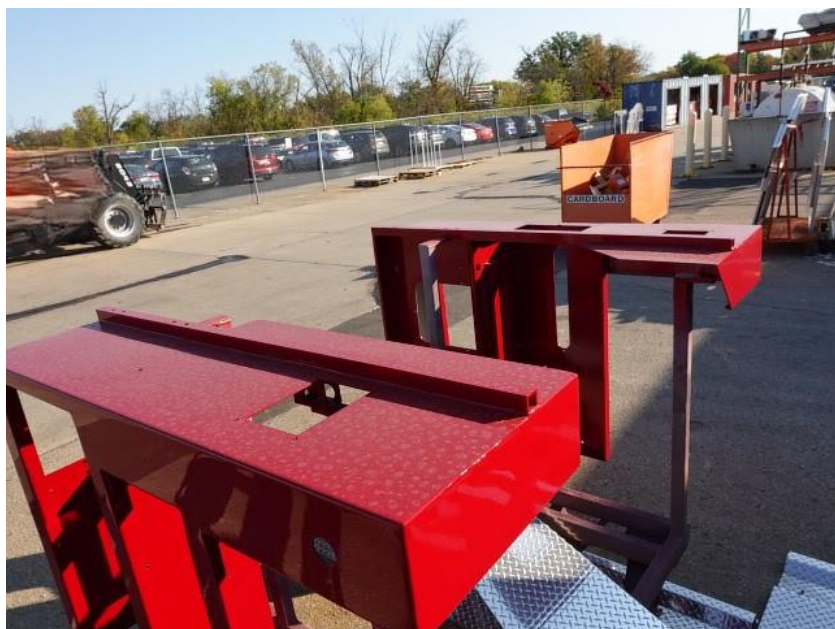
DSC03539



DSC03445



DSC03446



DSC03447



DSC03448



DSC03412



DSC03413



DSC03414



DSC03415



DSC03416



<https://reliantfire.com/>



An Oshkosh Corporation Company