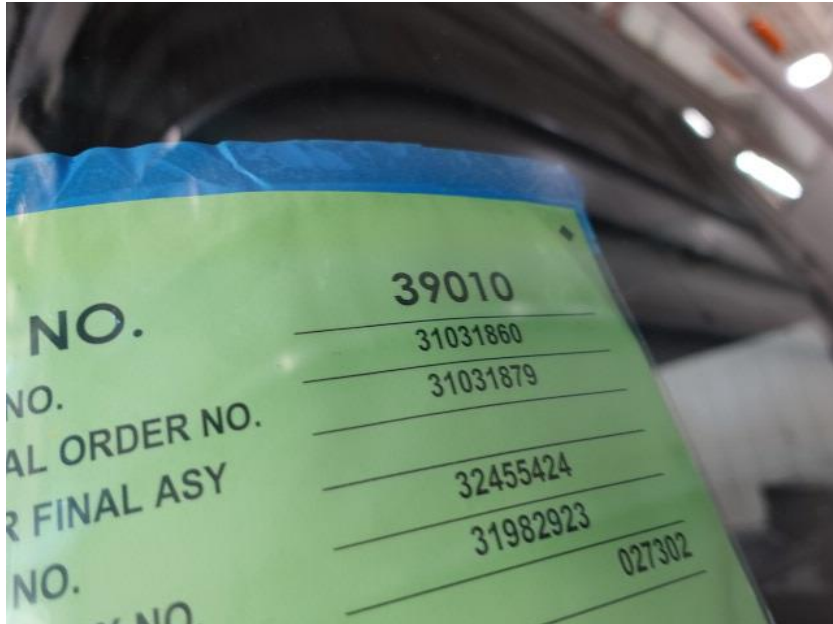


In-Production Photo Report for Portage Fire Department – Portage, WI Job# 39010

Status as of October 04, 2024

In this report the pump house and torque box were merged with the chassis while assembly continued, and both the front and rear body modules completed paint. In the next report your chassis may be staged to continue assembly while the front and rear body modules may begin initial assembly.





DSC03182



DSC03183



DSC03184



DSC03185



DSC03186



DSC03187



DSC03188



DSC03189



DSC03190



DSC03589



DSC03590



DSC03591



DSC03943



DSC03944



DSC03945



DSC03946



DSC03947



DSC03948



<https://reliantfire.com/>



An Oshkosh Corporation Company