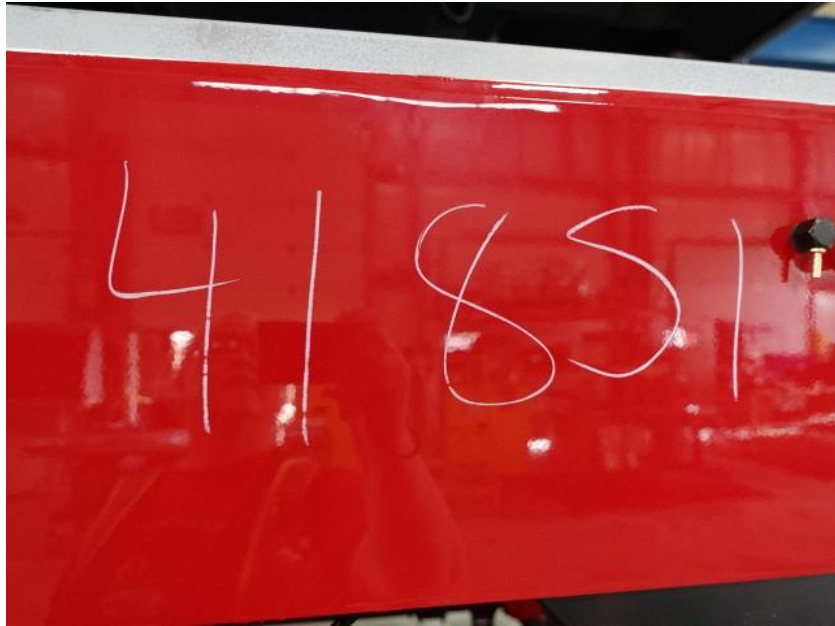


In-Production Photo Report for Lake Mills Fire Department, WI Job# 41851

Status as of August 30, 2024

In this report your cab continued initial assembly, the frame build continued, and the pump house continued initial assembly - followed by the cab and pump house being installed on the frame while the body completed fabrication. In the next report the chassis may be staged to continue assembly while the body may be staged to begin the paint process.





DSC03122



DSC03123



DSC03124



DSC03125



DSC03126



DSC03182



DSC03183



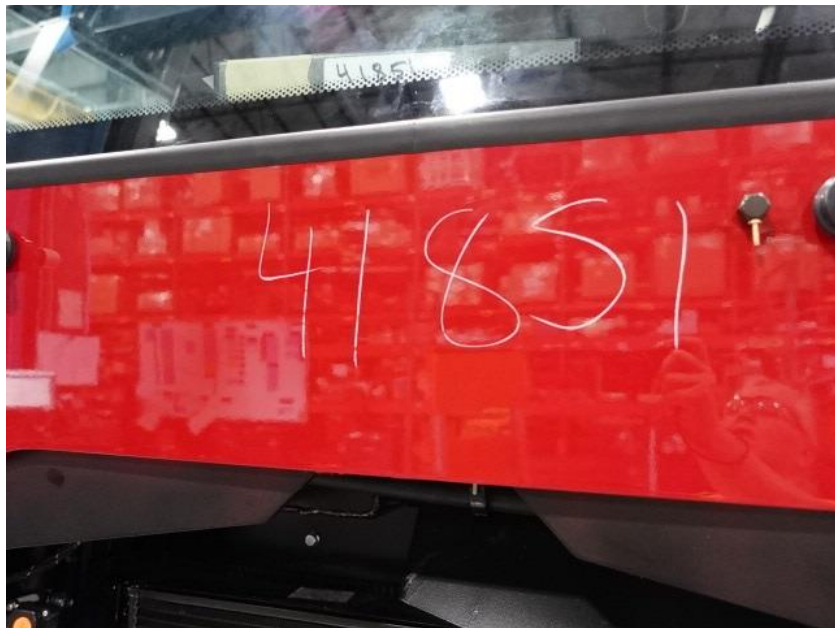
DSC03184



DSC03185



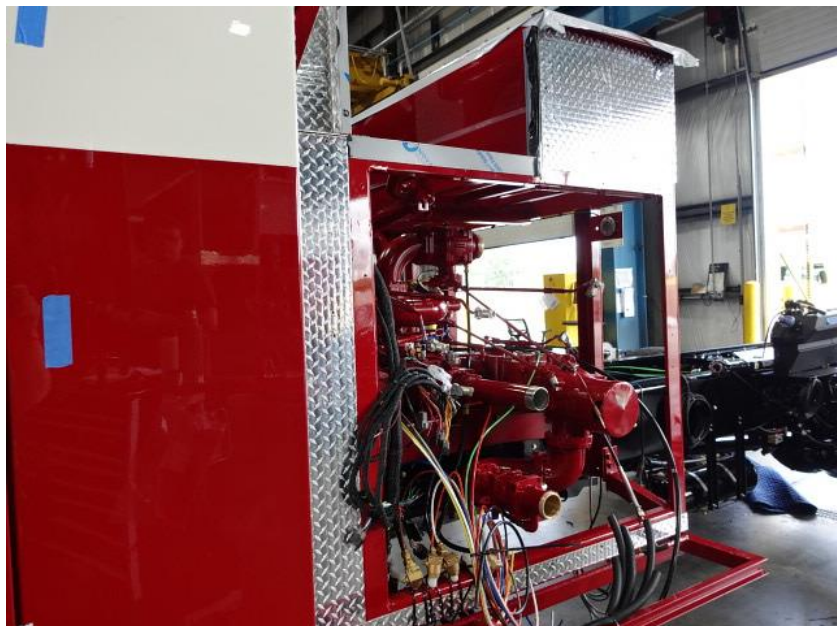
DSC03186



DSC04580



DSC04581



DSC04582



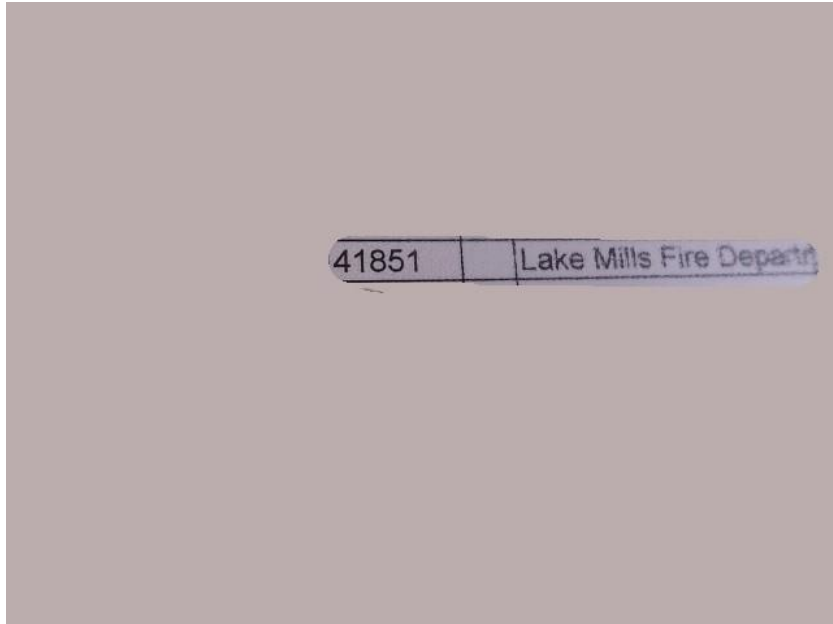
DSC04583



DSC04584



DSC04585



DSC03981



DSC03982



DSC03983



DSC03984



DSC03985



<https://reliantfire.com/>



An Oshkosh Corporation Company