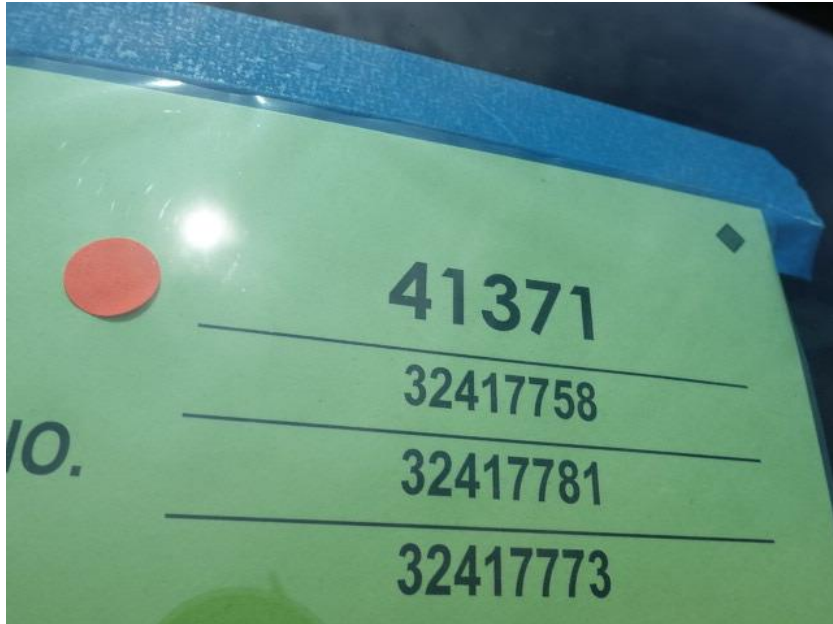


In-Production Photo Report for Norway Fire Department, WI Job# 41371

Status as of July 12, 2024

In this report your cab and pump house were installed on the frame while the body completed the paint process. In the next report your chassis may remain staged to continue assembly while the body may begin initial assembly.

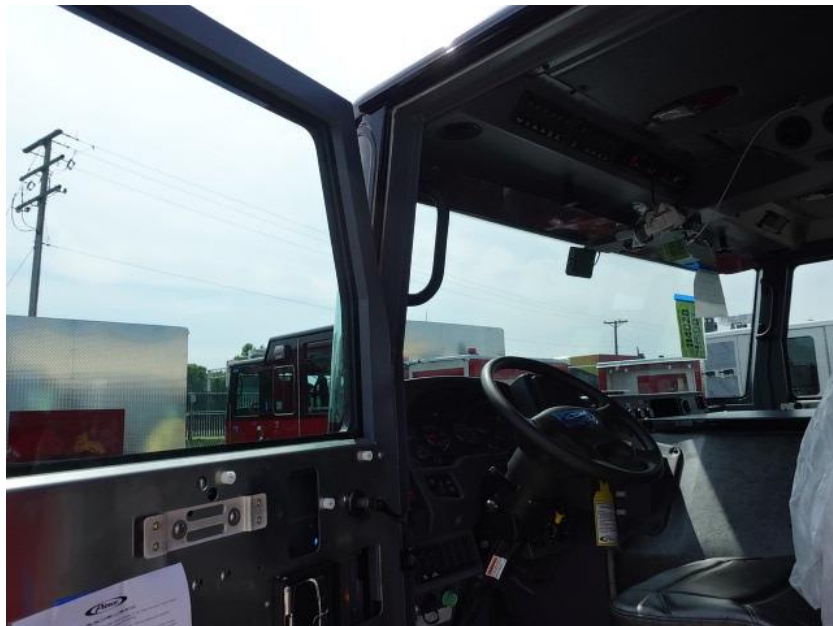




DSC00820



DSC00821



DSC00822



DSC00823



DSC00824



DSC00825



DSC00826



DSC00827



DSC00828



DSC00829



DSC00830



DSC00831



DSC00832



DSC00833



DSC00834



DSC00835



DSC00836



DSC00837



DSC00838



DSC00839



DSC00840



DSC00841



DSC00842



DSC00843



DSC00844



DSC00845



DSC00846



DSC00847



DSC00848



DSC00849



DSC00850



DSC00851



DSC00852



DSC00853



DSC00854



DSC00855



DSC00856



DSC00857



DSC00858



DSC00859



DSC00860



DSC00861



DSC00862



DSC00863



DSC00864



DSC00865



DSC00866



DSC00867



DSC00868



DSC00869



DSC00870



DSC00871



DSC00872



DSC00873



DSC03815



DSC03816



DSC03817



DSC03818



DSC03819



<https://reliantfire.com/>



An Oshkosh Corporation Company