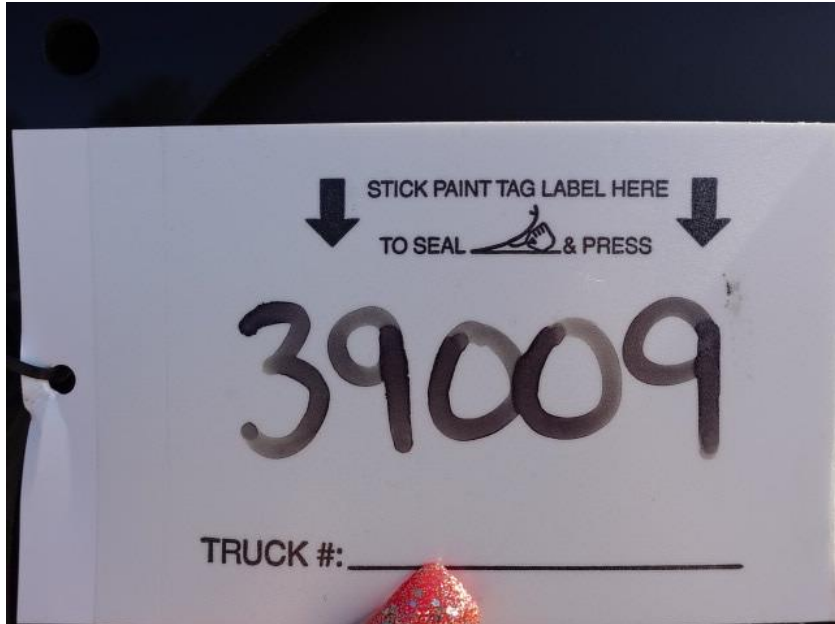


In-Production Photo Report for Monroe Fire Department, WI Job# 39009

Status as of June 21, 2024

In this report your chassis was staged to continue assembly, the torque box continued initial assembly, the front body module was staged, and the rear body module completed paint and began initial assembly. In the next report the torque box may be merged with the chassis, the front body module may remain staged, and the rear body module may continue initial assembly.





DSC03000



DSC03001



DSC03002



DSC03003



DSC03004



DSC03005



DSC03006



DSC03007



DSC03008



DSC03009



DSC03010



DSC03011



DSC03012



DSC03013



DSC03014



DSC03015



DSC03016



DSC03017



DSC03018



DSC03019



DSC03020



DSC03021



DSC03022



DSC03227



DSC03228



DSC03229



DSC03230



DSC03231



DSC04254



DSC04255



DSC04256



DSC04213



DSC04214



DSC04215



DSC04216



DSC04217



<https://reliantfire.com/>



An Oshkosh Corporation Company