

In-Production Photo Report for Monroe Fire Department, WI Job# 39009

Status as of June 14, 2024

In this report your cab and pump house were installed on the frame, the torque box began initial assembly, the front body module remained staged, and the rear body module continued through paint. In the next report your chassis may be staged to continue assembly, the torque box may continue initial assembly, the front body module may remain staged, and the rear body module may begin initial assembly.





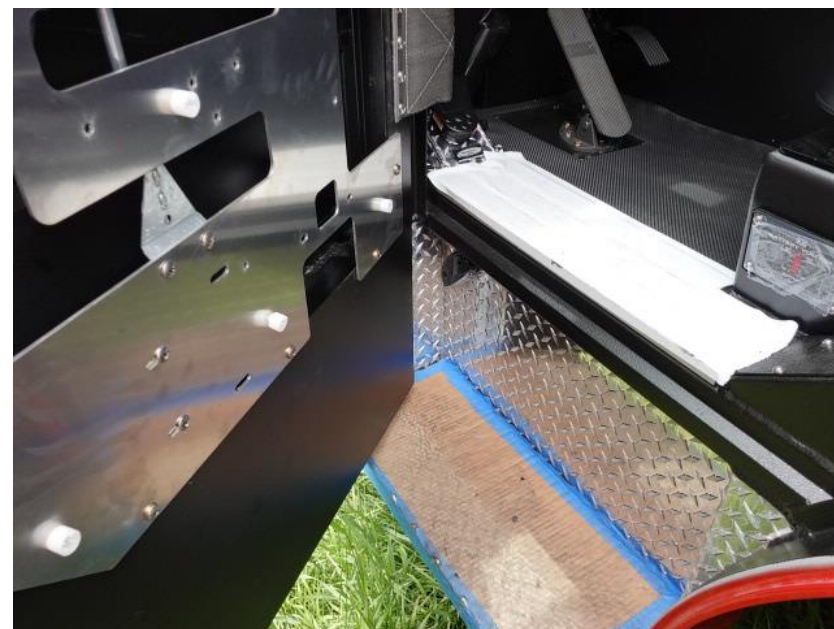
DSC00047



DSC00048



DSC00049



DSC00050



DSC00051



DSC00052



DSC00053



DSC00054



DSC00055



DSC00056



DSC00057



DSC00058



DSC00059



DSC00060



DSC00061



DSC00062



DSC00063



DSC00064



DSC00065



DSC00066



DSC00067



DSC00068



DSC00069



DSC00070



DSC00071



DSC00072



DSC00073



DSC00074



DSC00075



DSC00076



DSC00077



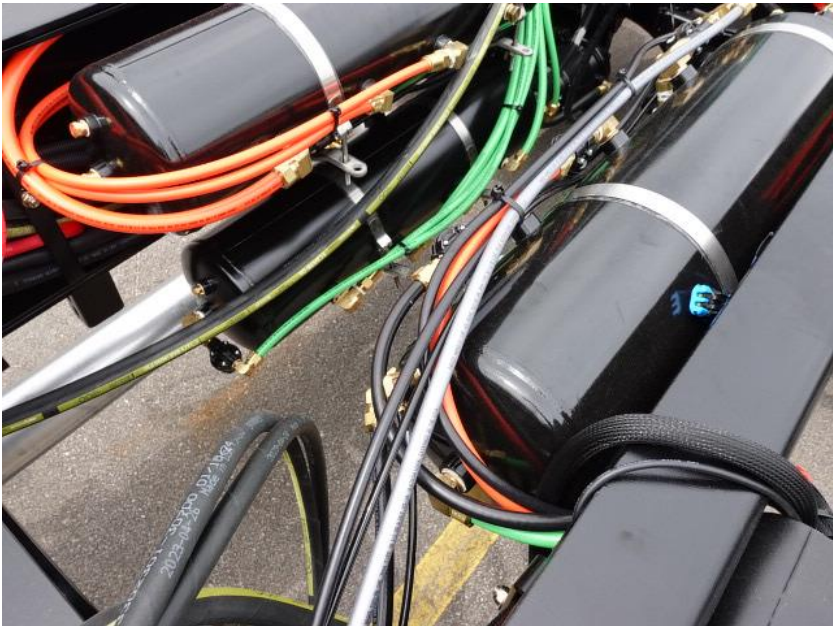
DSC00078



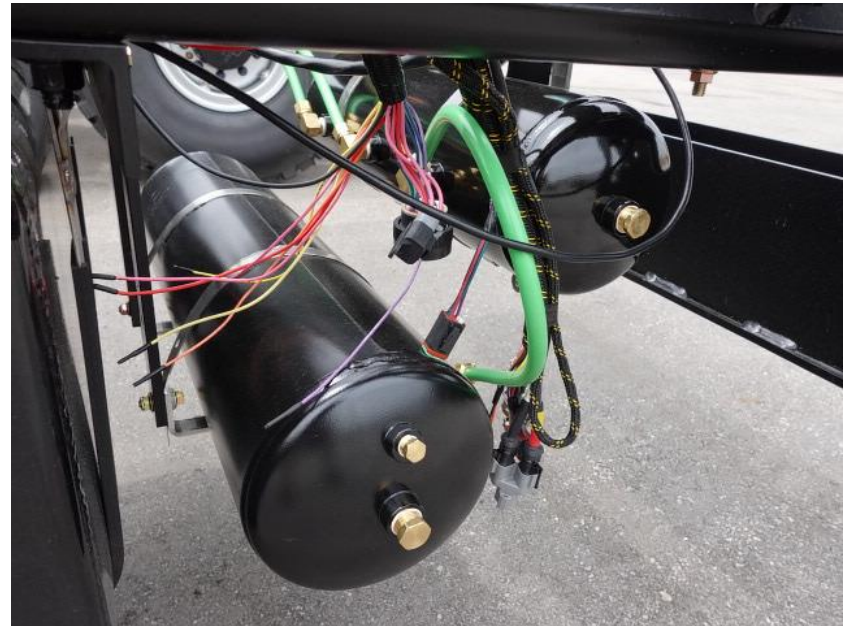
DSC00079



DSC00080



DSC00081



DSC00082



DSC00083



DSC00084



DSC00085



DSC00086



DSC00087



DSC00088



DSC00089



DSC00090



DSC00091



DSC00092



DSC00093



DSC00094



DSC00095



DSC00096



DSC00097



DSC00098



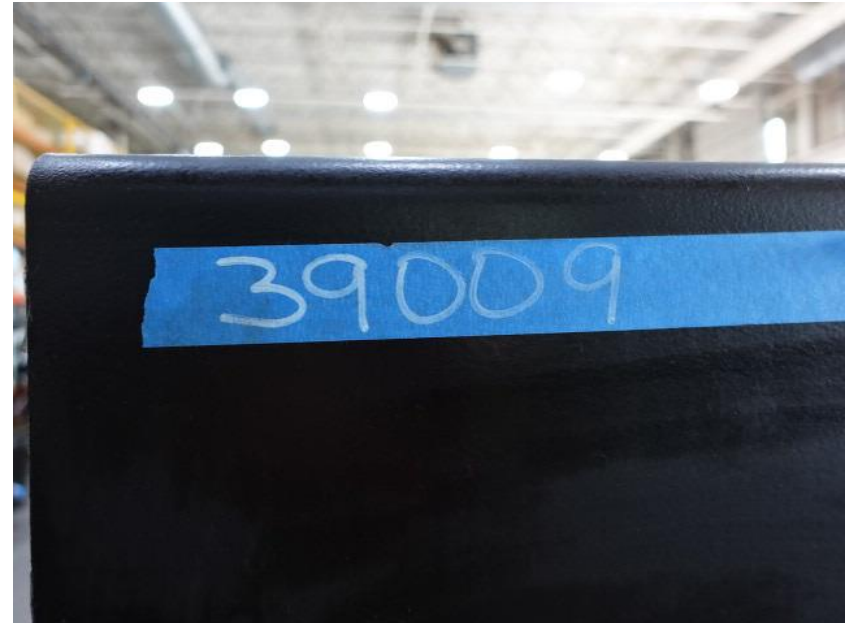
DSC00099



DSC00100



DSC00101



DSC03194



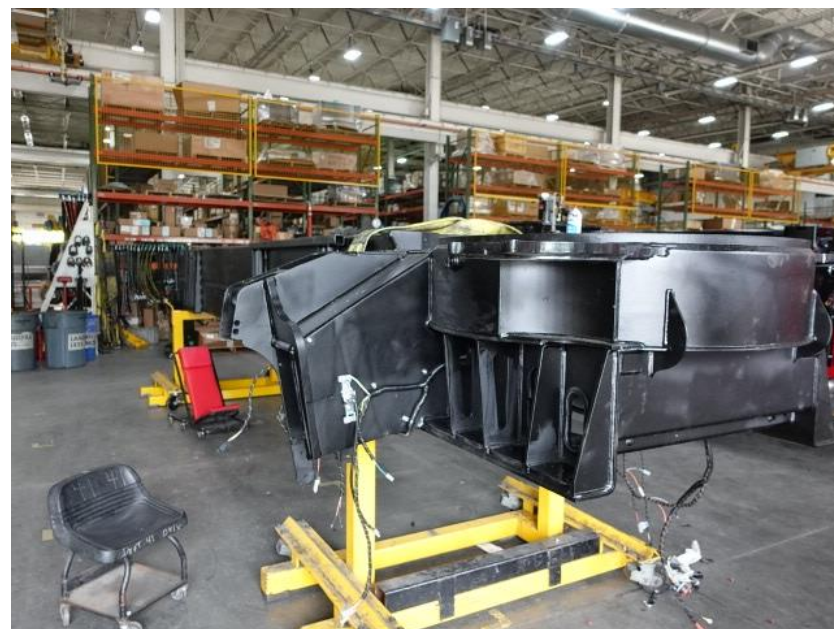
DSC03195



DSC03196



DSC03197



DSC03198



DSC01314



DSC01315



DSC01316



DSC01246



DSC01247



DSC01248



DSC01249



DSC01250



<https://reliantfire.com/>



An Oshkosh Corporation Company