

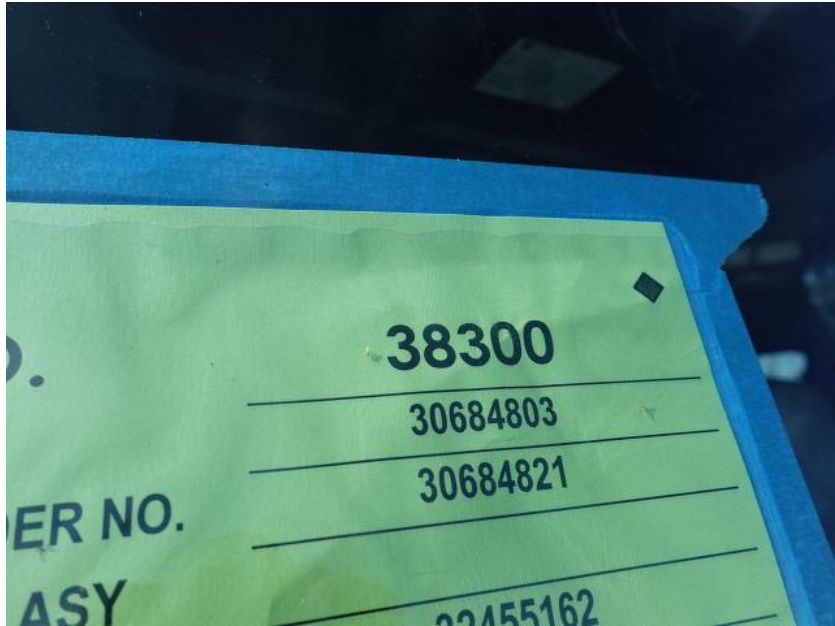
# In-Production Photo Report for Jefferson Fire Department, WI Job# 38300

---

Status as of June 21, 2024

In this report your cab and pump house were merged with the frame, the torque box was staged, and the body began the paint process. In the next report your chassis may remain staged to continue assembly, the torque box may remain staged, and the body may continue through paint.





DSC00022



DSC00023



DSC00024



DSC00025





DSC00026



DSC00027



DSC00028



DSC00029





DSC00030



DSC00031



DSC00032



DSC00033





DSC00034



DSC00035



DSC00036



DSC00037



DSC00038



DSC00039



DSC00040



DSC00041

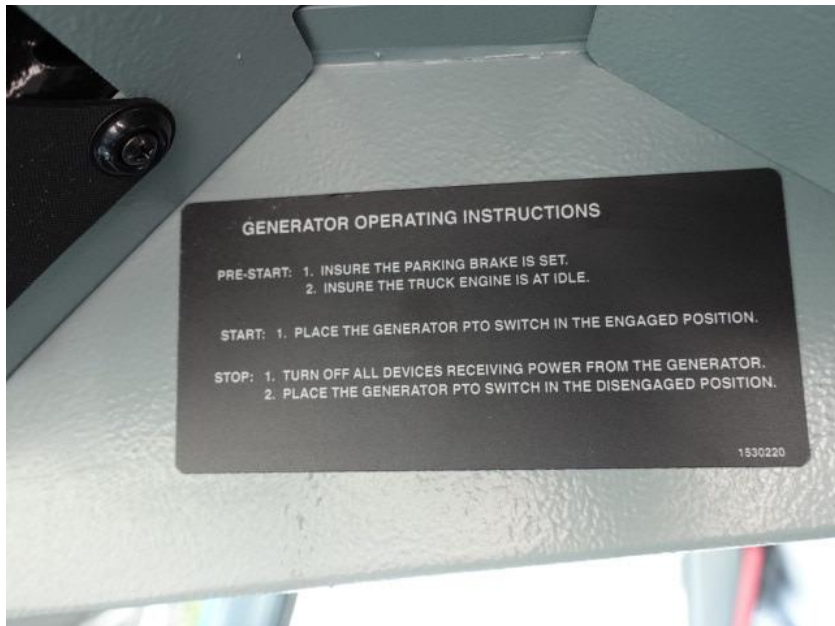




DSC00042



DSC00043



DSC00044



DSC00045



DSC00046



DSC00047



DSC00048



DSC00049





DSC00050



DSC00051



DSC00052



DSC00053





DSC00054



DSC00055

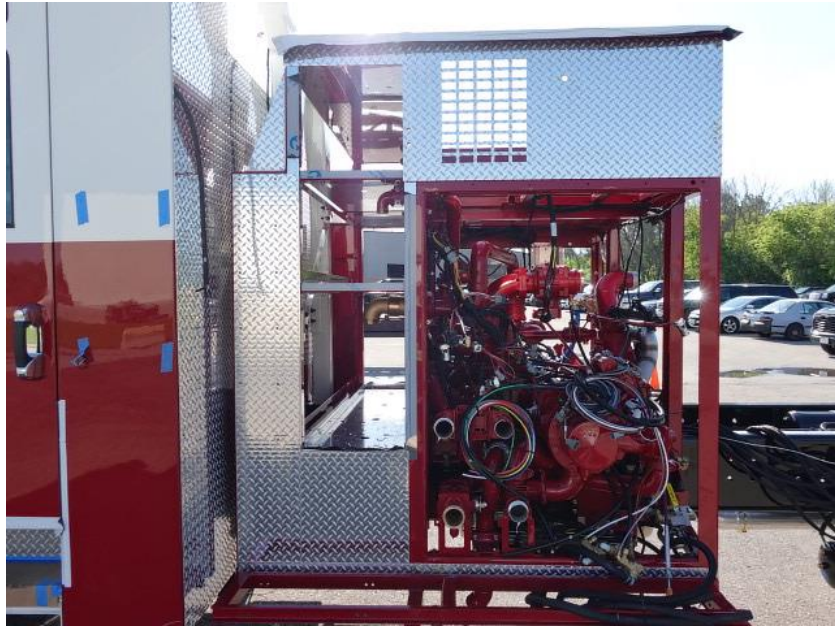


DSC00056



DSC00057





DSC00058



DSC00059



DSC00060



DSC00061





DSC00062



DSC00063



DSC00064



DSC00065





DSC00066



DSC00067



DSC00068



DSC00069





DSC00070



DSC00071



DSC00072



DSC00073





DSC00074



DSC00075



DSC00076



DSC00077





DSC00078



DSC00079



DSC00080



DSC00081





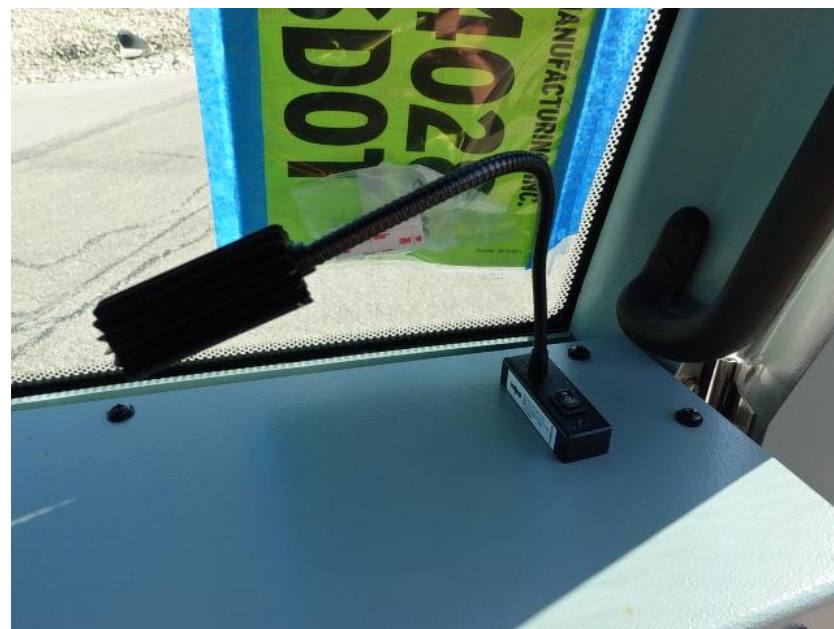
DSC00082



DSC00083



DSC00084



DSC00085





DSC00086



DSC00087



DSC00088



DSC00089





DSC00090



DSC00091



DSC00092



DSC00093





DSC03111



DSC03112



DSC03113

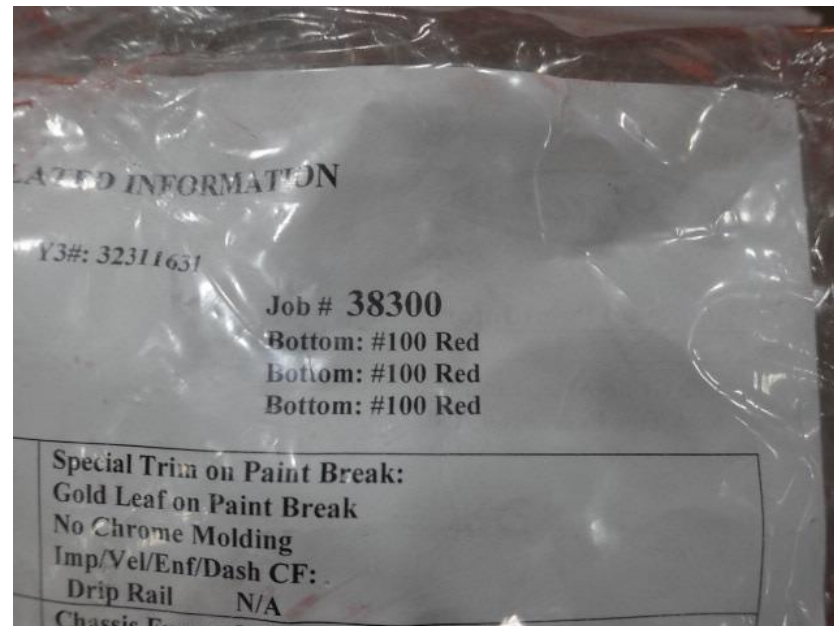


DSC03114





DSC03115



DSC01031



DSC01032



DSC01033





DSC01034



DSC01035





<https://reliantfire.com/>



An Oshkosh Corporation Company