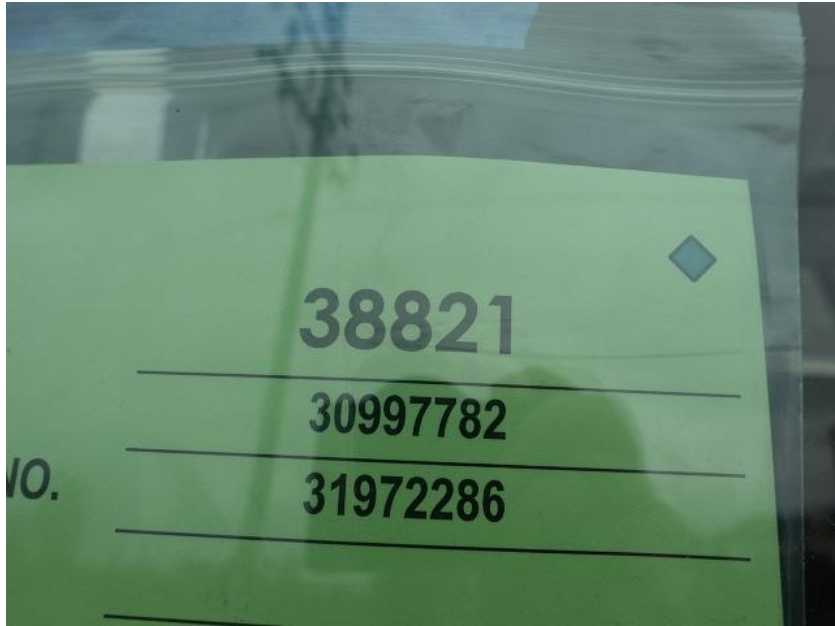


In-Production Photo Report for Wauwatosa Fire Department, WI Job# 38821

Status as of May 10, 2024

In this report the torque box was merged with the chassis followed by the transverse compartment being installed while the body was staged to continue initial assembly. In the next report the body may be installed on the chassis while the apparatus may continue assembly.





DSC00001



DSC00002



DSC00003



DSC00004



DSC00005



DSC00006



DSC00007



DSC00008



DSC00009



DSC00010



DSC00011



DSC00012



DSC00013



DSC00014



DSC00015



DSC00016



DSC00017



DSC00018



DSC00019



DSC00020



DSC00021



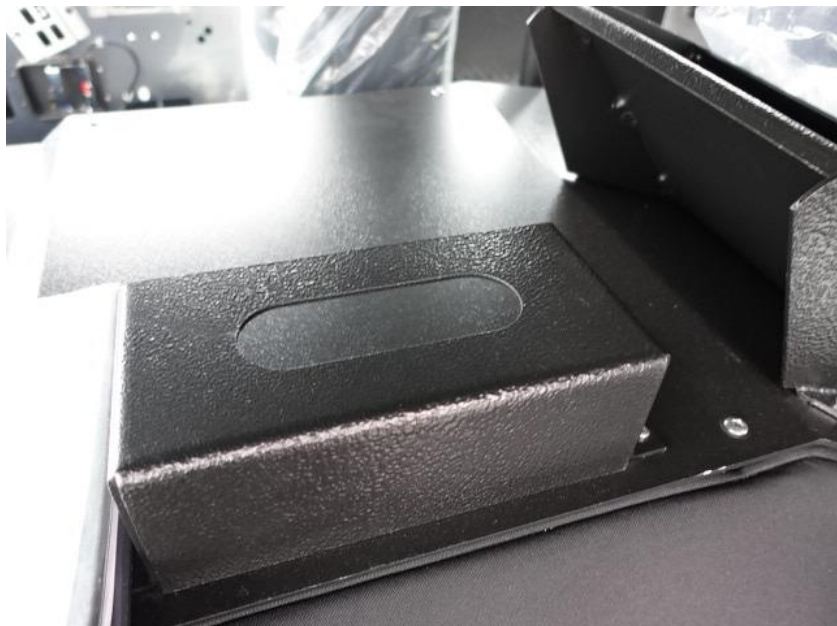
DSC00022



DSC00023



DSC00024



DSC00025



DSC00026



DSC00027



DSC00028



DSC00029



DSC00030



DSC00031



DSC00032



DSC00033



DSC00034



DSC00035



DSC00036



DSC00037



DSC00038



DSC00039



DSC00040



DSC00041



DSC00042



DSC00043



DSC00044



DSC00045



DSC00046



DSC00047



DSC00048



DSC00049



DSC00050



DSC00051



DSC00052



DSC00053



DSC00054



DSC00055



DSC00056



DSC00057



DSC00058



DSC00059



DSC00060



DSC00061



DSC01544



DSC01545



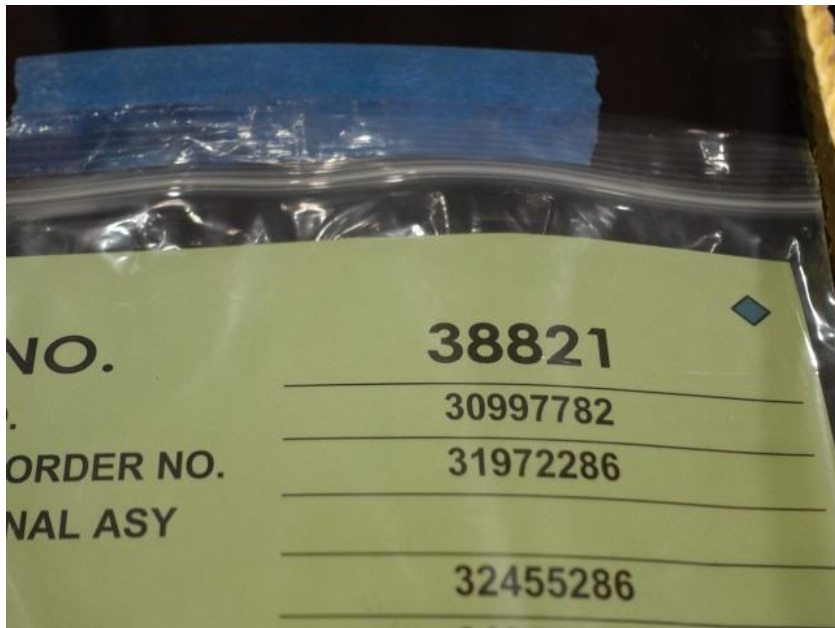
DSC01546



DSC01547



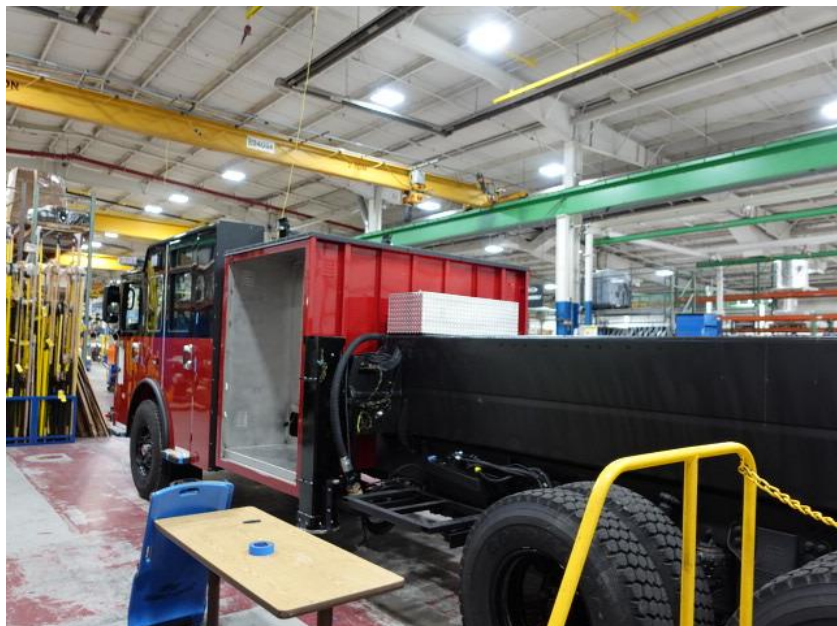
DSC01548



DSC03497



DSC03498



DSC03499



DSC03500



DSC03501



DSC03502



DSC03503



<https://reliantfire.com/>



An Oshkosh Corporation Company