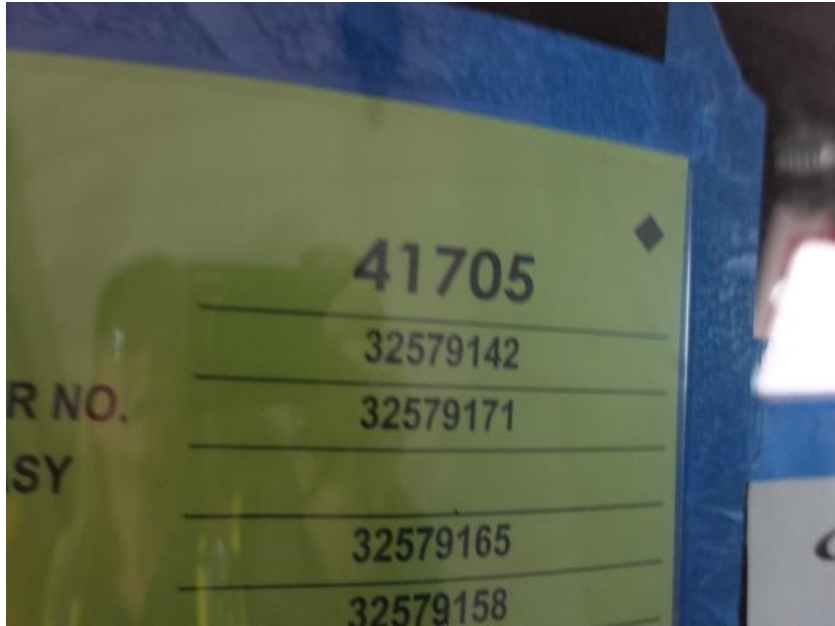


In-Production Photo Report for City of Beloit Fire Department, WI Job# 41705

Status as of May 03, 2024

In this report your cab and pump house were installed on the frame, the torque box began initial assembly, and the body began the paint process. In the next report the torque box may be installed on the chassis and assembly may continue while the body may continue through paint.





DSC03751



DSC03752



DSC03753



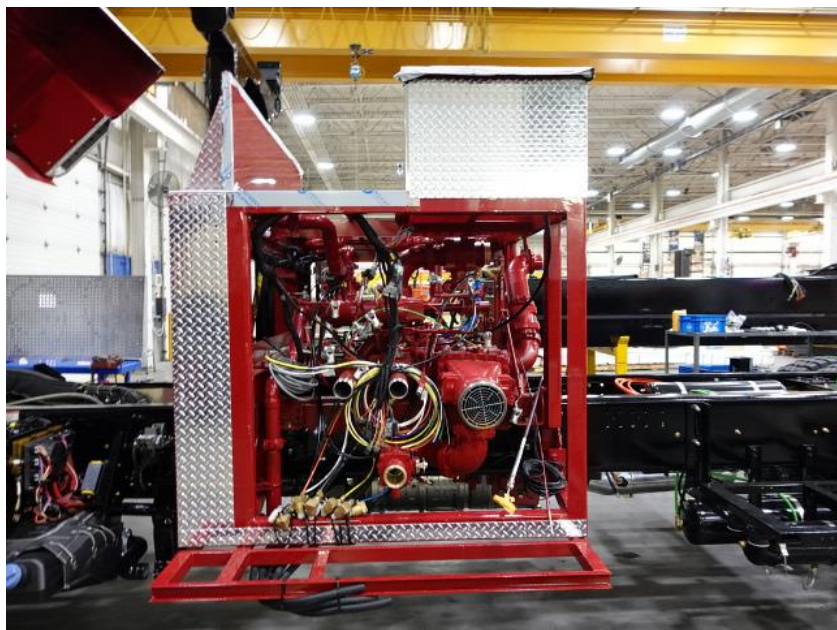
DSC03754



DSC03755



DSC03756



DSC03757



DSC03758



DSC03759



DSC03760



DSC03761



DSC03762



DSC03763



DSC03764



DSC03765



DSC03766



DSC03767



DSC03768



DSC03769



DSC03213



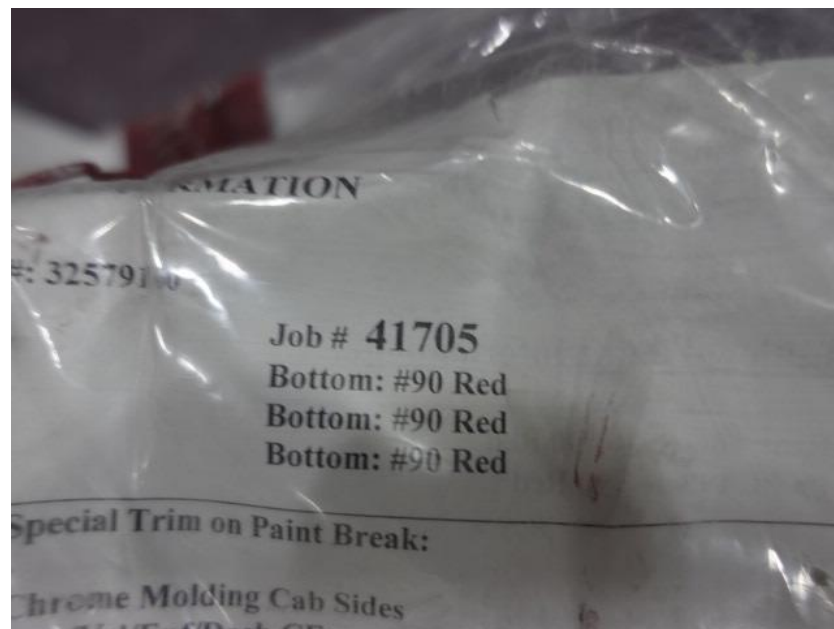
DSC03214



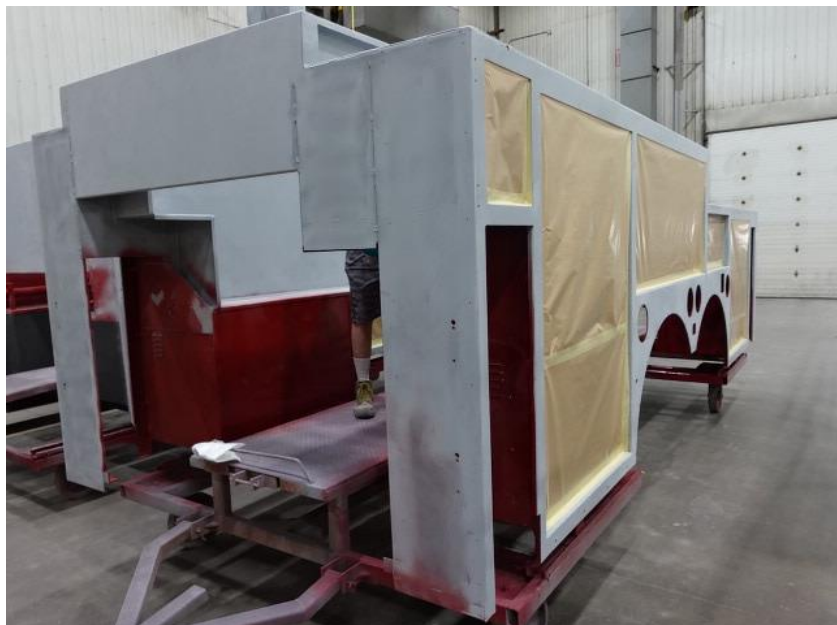
DSC03215



DSC03216



DSC00472



DSC00473



DSC00474



DSC00475



DSC00476



<https://reliantfire.com/>



An Oshkosh Corporation Company