

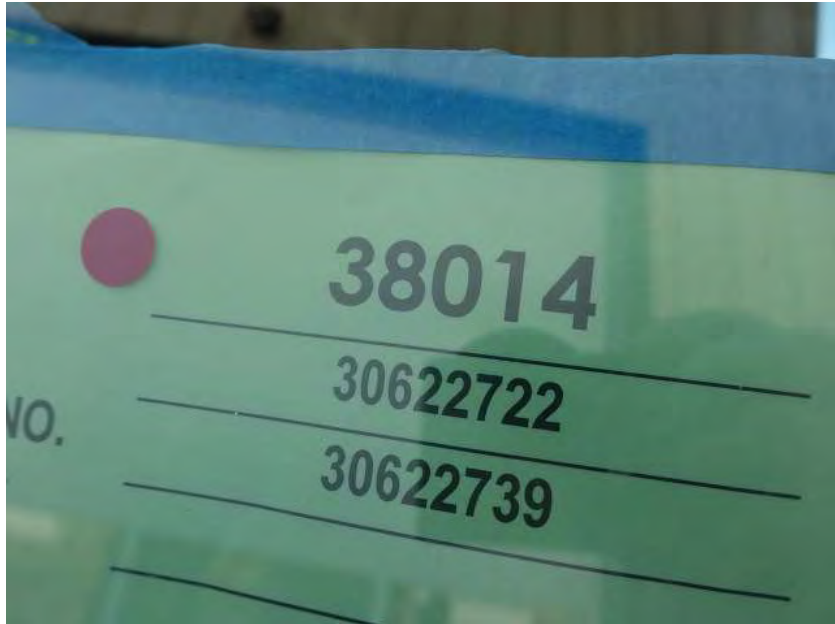
# In-Production Photo Report for Shenandoah Fire Department, IA Job# 38014

---

Status as of April 19, 2024

In this report your apparatus completed aerial testing and released to quality and graphics where any remaining content will be applied. Once finished it will be made ready for your customer acceptance inspection. This is your last scheduled report.





DSC00889



DSC00890



DSC00891



DSC00892



DSC00893



DSC00894



DSC00895

Pierce		OSHKOSH	
Manufactured by: Pierce Manufacturing, Inc. <small>Custom Designed and Manufactured Exclusively For</small>		OSHKOSH Corporation VEHICLE EMISSION CONTROL INFORMATION Wanda Family: R018EVO00101 Sub-Category: Emergency Vehicle THIS VEHICLE COMPLIES WITH U.S. EPA REGULATIONS FOR 2021 MODEL YEAR HEAVY-DUTY VEHICLES. THIS VEHICLE WAS CERTIFIED AS AN EMERGENCY VEHICLE UNDER 49 CFR 101.105(b)(1).	
Mo./Yr of Mfg	Mar - 2024	Job No.	38014
GVWR	35,381 KG ( 78,000 LB)	Tire-Limited Max Speed	65 mph
		Chassis	Velocity
GAWR		TIRES	
Front	10,886 KG ( 24,000 LB)	425/65R22.5 (L)	22.50x12.25
Rear	24,494 KG ( 54,000 LB)	315/60R22.5 (L)	22.50x9.00
		RIMS	
		COLD TIRE INFLATION	
		827 kPa ( 120 PSI)	SINGLE
		723 kPa ( 105 PSI)	DUAL
THIS VEHICLE CONFORMS TO ALL APPLICABLE U.S. FEDERAL MOTOR VEHICLE SAFETY STANDARDS IN EFFECT ON THE DATE OF MANUFACTURE SHOWN ABOVE.			
VIN		TYPE	
4P1BCAGF1RA026394		Emergency Vehicle	
CUSTOM HIGH GRADE PAINT FINISH			
Red	Pierce No. 30	Sikkens Autocolor BTLY Basecoat	FLM03042
White	Pierce No. 19	Sikkens Autocolor BTLY Basecoat	FLM04048
FLUID CAPACITIES			
<small>Verify All Fluid Capacities and Flashes At Maintenance Kiosk (located in the Operator Manual At The Recommended) Type Location</small>			
Component	Fluid Capacity	Fluid Type	
Engine	41.6 Liter	44.8 Quarts	15W40 CK-4
Trans	36.9 Liter	39.0 Quarts	TES 300 ATF
Coolant	58.7 Liter	62.0 Quarts	DAT 51C
Power Steering	3.8 Liter	4.0 Quarts	TES 300 ATF
Front Axle			80W90 CK-4B LHM
Rear Axle (R2 or Weight)	26.5 Liter	28.1 Quarts	80W90 CK-4B LHM
Rear Axle (R1)	17.1 Liter	18.1 Quarts	80W90 CK-4B LHM
Cab Top	4.7 Liter	5.0 Quarts	TES 300 ATF
Gas	8.0 Liter	8.5 Quarts	SAE

DSC00896



DSC00897



DSC00898



DSC00899



DSC00900



DSC00901



DSC00902



DSC00903



DSC00904



DSC00905



DSC00906



DSC00907



DSC00908



DSC00909



DSC00910



DSC00911



DSC00912



DSC00913



DSC00914



DSC00915

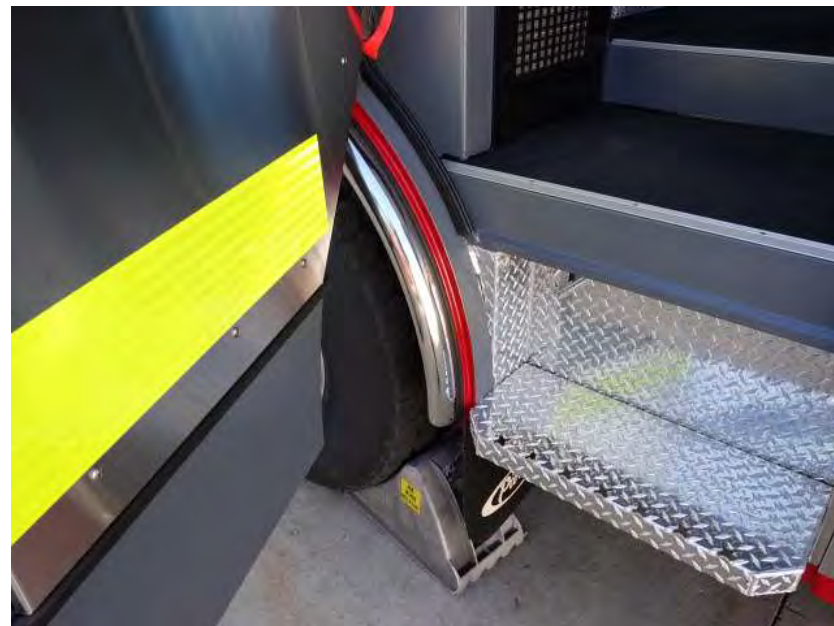


DSC00916





DSC00917



DSC00918



DSC00919



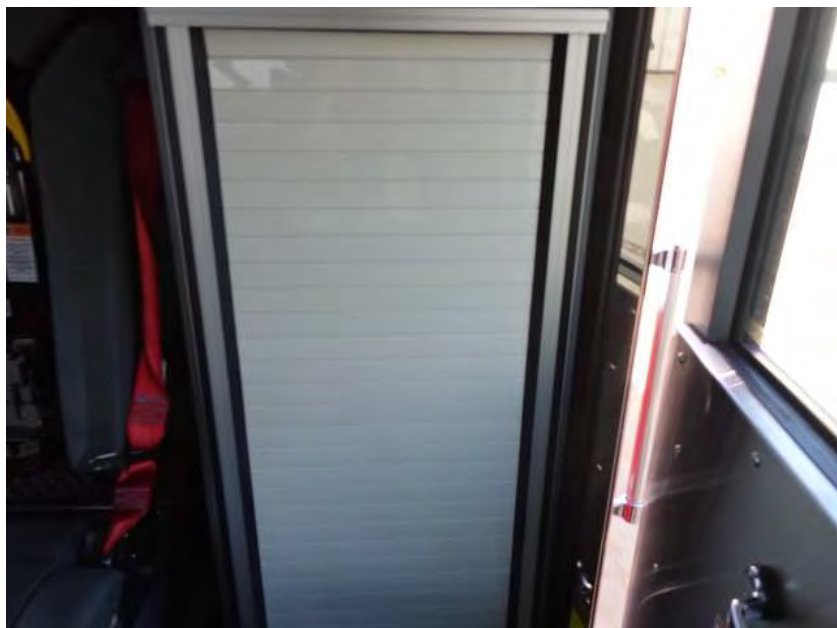
DSC00920



DSC00921



DSC00922



DSC00923



DSC00924



DSC00925



DSC00926



DSC00927



DSC00928



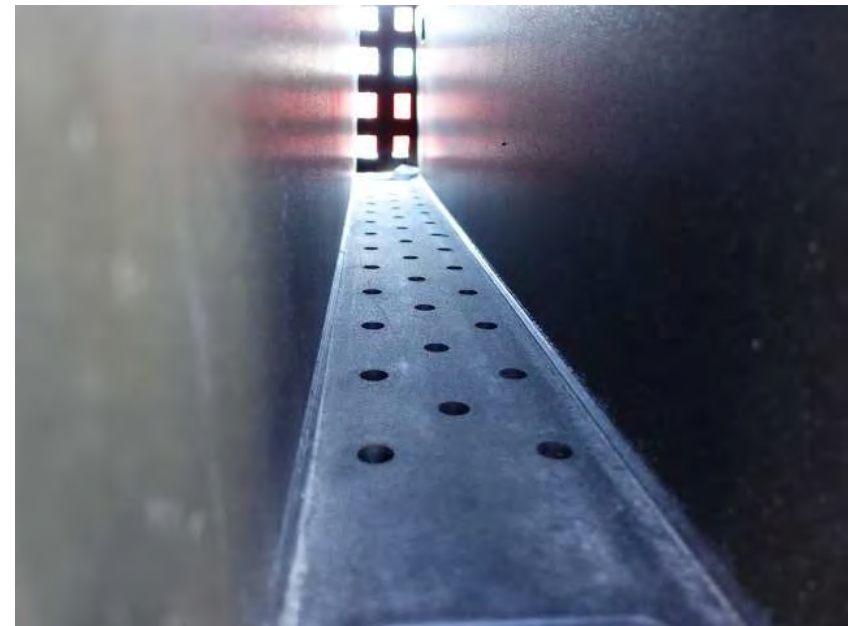
DSC00929



DSC00930



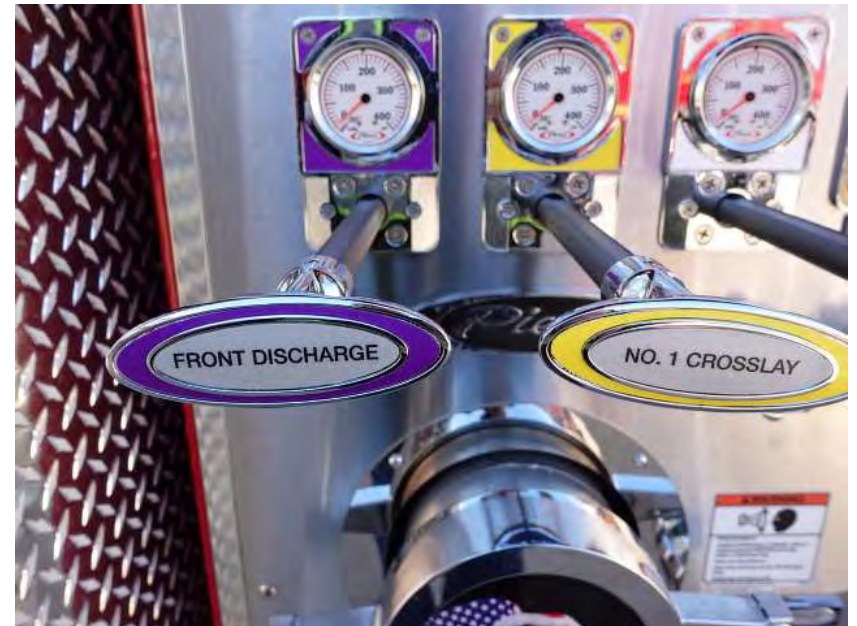
DSC00931



DSC00932



DSC00933



DSC00934



DSC00935



DSC00936



DSC00937



DSC00938



DSC00939



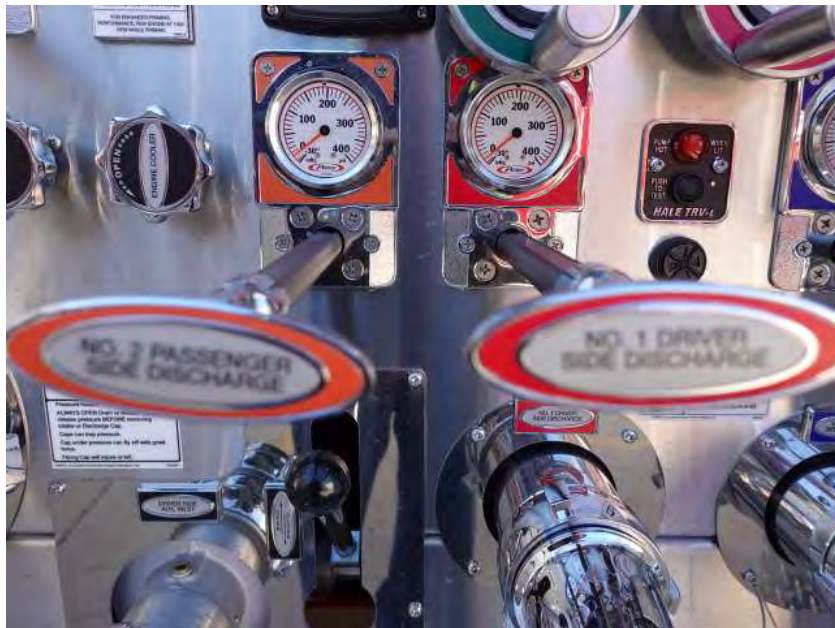
DSC00940



DSC00941



DSC00942



DSC00943



DSC00944



DSC00945



DSC00946



DSC00947



DSC00948





DSC00949



DSC00950



DSC00951



DSC00952



DSC00953



DSC00954



DSC00955



DSC00956



DSC00957



DSC00958



DSC00959



DSC00960



DSC00961



DSC00962



DSC00963



DSC00964



DSC00965



DSC00966



DSC00967



DSC00968



DSC00969



DSC00970



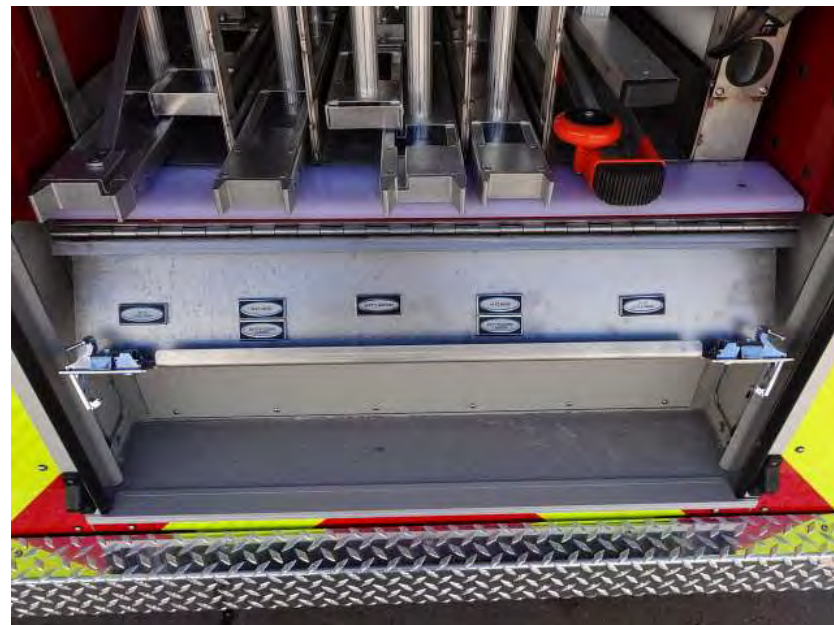
DSC00971



DSC00972



DSC00973



DSC00974



DSC00975



DSC00976



DSC00977



DSC00978



DSC00979



DSC00980





DSC00981



DSC00982



DSC00983



DSC00984



DSC00985



DSC00986



DSC00987



DSC00988



DSC00989



DSC00990



DSC00991



DSC00992



DSC00993



DSC00994



DSC00995



DSC00996



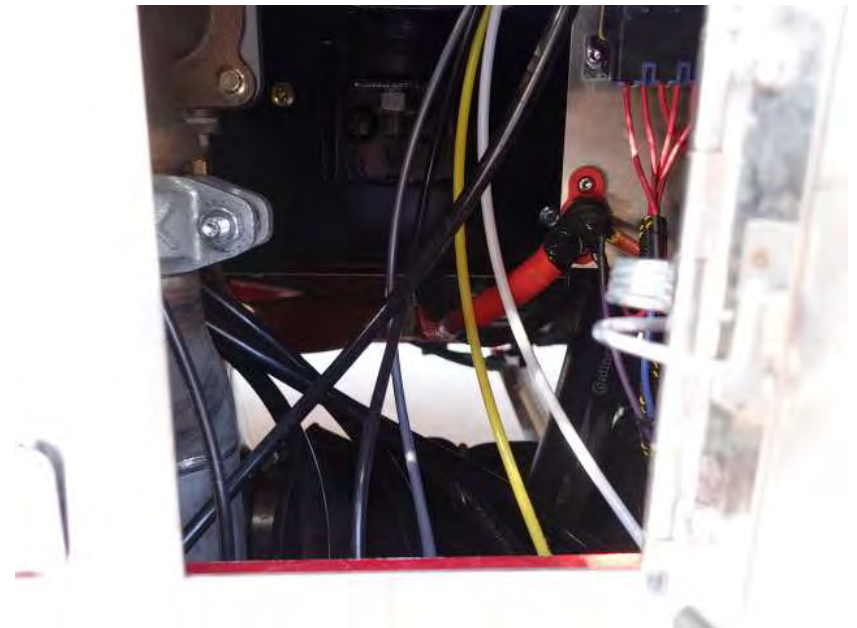
DSC00997



DSC00998



DSC00999



DSC01000



DSC01001



DSC01002



DSC01003



DSC01004



DSC01005



DSC01006



DSC01007



DSC01008



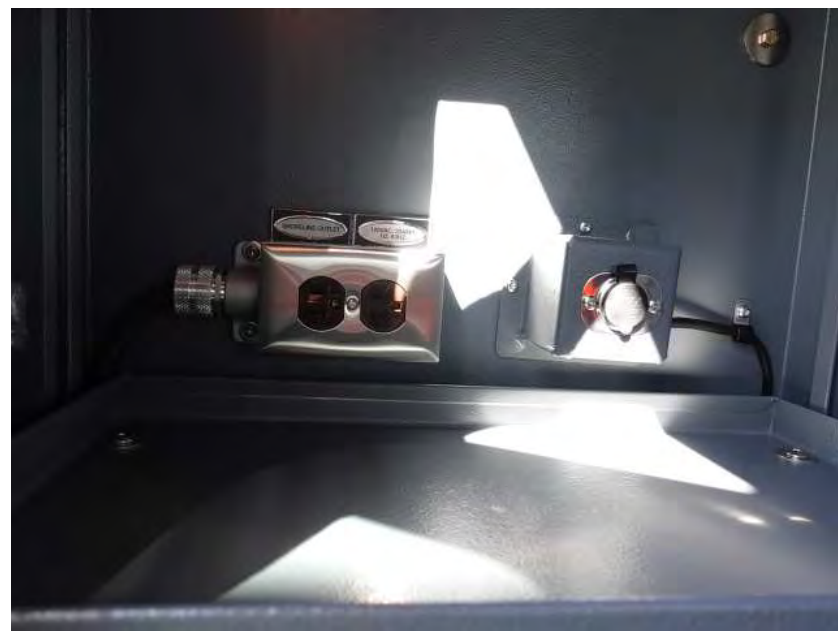
DSC01009



DSC01010



DSC01011



DSC01012





DSC01013



DSC01014



DSC01015



DSC01016



DSC01017



DSC01018



DSC01019



DSC01020



DSC01021



DSC01022



DSC01023



DSC01024



DSC01025



DSC01026



DSC01027



DSC01028



DSC01029



DSC01030



DSC01031



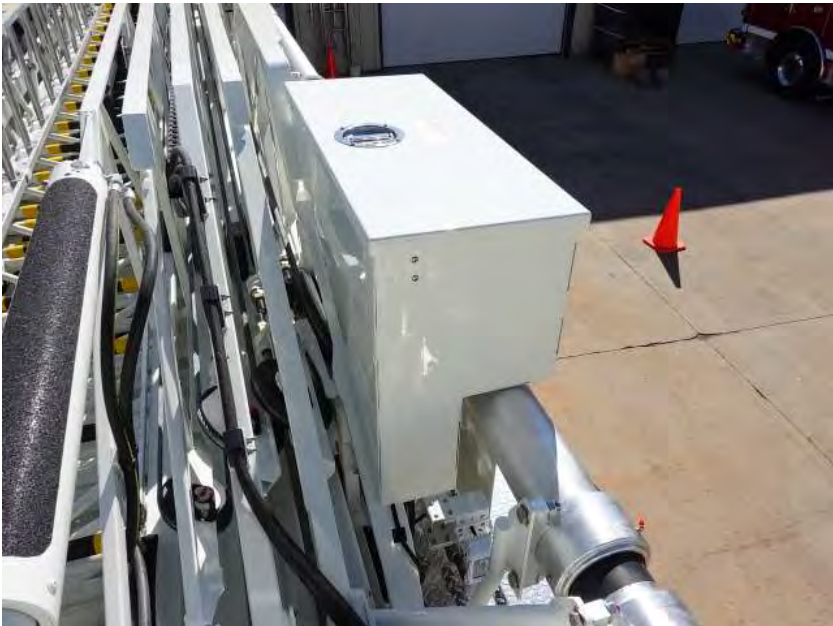
DSC01032



DSC01033



DSC01034



DSC01035



DSC01036



DSC01037



DSC01038



DSC01039



DSC01040



DSC01041



DSC01042



DSC01043



DSC01044





DSC01045



DSC01046



DSC01047



DSC01048



DSC01049



DSC01050



DSC01051



DSC01052



DSC01053



<https://reliantfire.com/>



An Oshkosh Corporation Company