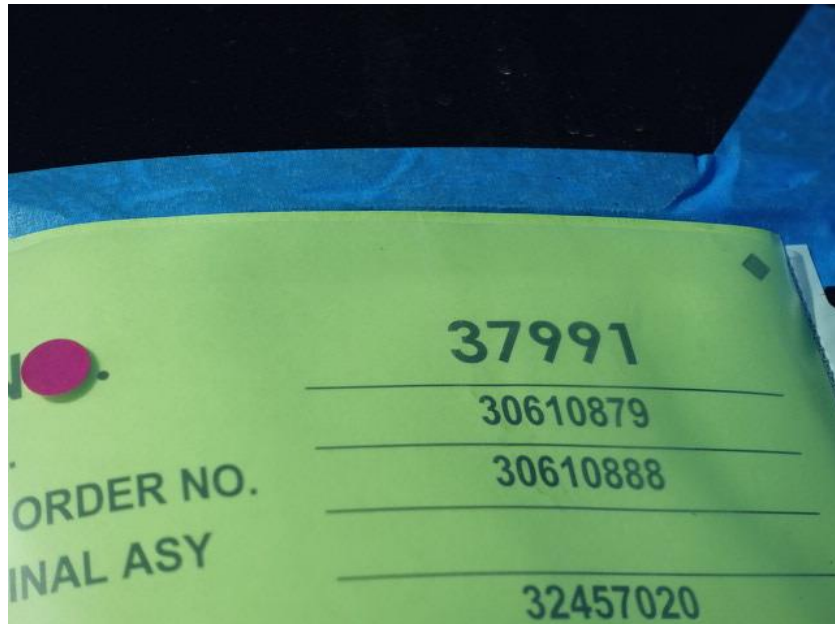


In-Production Photo Report for Lake Country Fire and Rescue, WI Job# 37991

Status as of December 15, 2023

In this report the forward body module was merged with the chassis while assembly continued, and the rear body module continued initial assembly. In the next report chassis may remain staged to continue assembly while the rear body module may continue initial assembly.





DSC03529



DSC03530



DSC03531



DSC03532



DSC03533



DSC03534



DSC03535



DSC03536



DSC03537



DSC03538



DSC03539



DSC03540



DSC03541



DSC03542



DSC03543



DSC03544



DSC03545



DSC03546



DSC03547



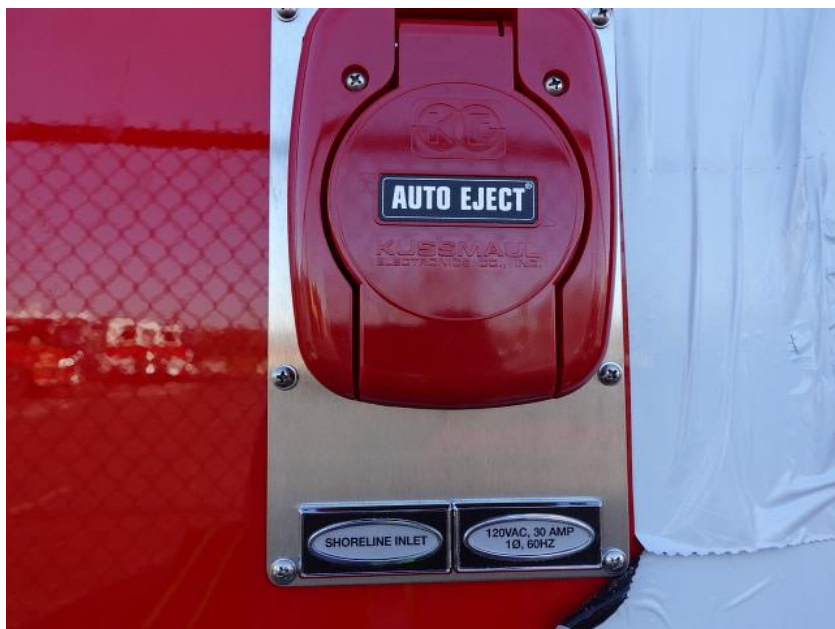
DSC03548



DSC03549



DSC03550



DSC03551



DSC03552



DSC03553



DSC03554



DSC03555



DSC03556



DSC03557



DSC03558



DSC03559



DSC03560



DSC03561



DSC03562



DSC03563



DSC03564



DSC03565



DSC03566



DSC03567



DSC03568



DSC03569



DSC03570



DSC03571



DSC03572



DSC03573



DSC03574



DSC03575



DSC03576



DSC01342



DSC01343



DSC01344



DSC01345



DSC01346



<https://reliantfire.com/>



An Oshkosh Corporation Company