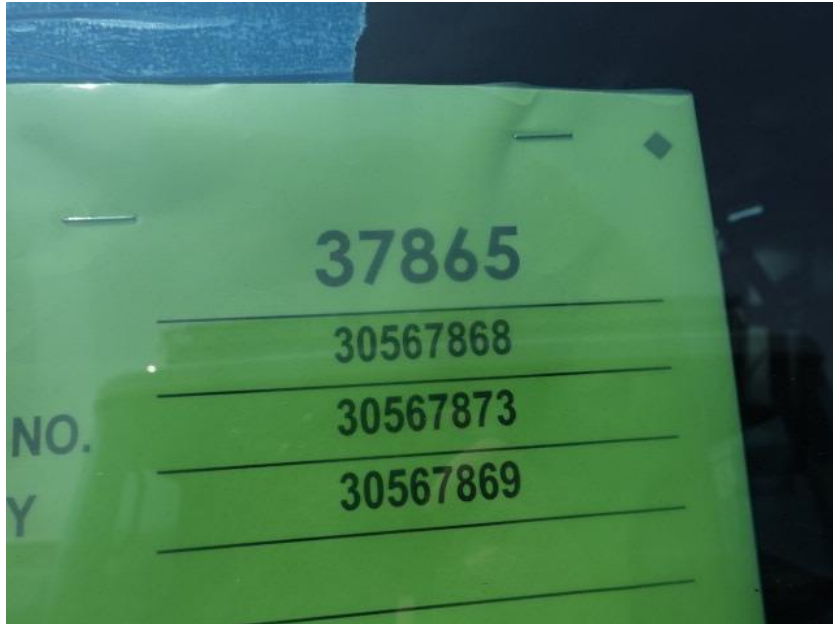


# In-Production Photo Report for Hartford Fire and Rescue, WI Job# 37865

Status as of August 11, 2023

In this report the cab and pump house were installed on the frame while the body completed initial assembly and was staged. In the next report the body may be merged with the chassis while assembly may continue.





DSC03224



DSC03225



DSC03226



DSC03227





DSC03228



DSC03229



DSC03230



DSC03231



DSC03232



DSC03233



DSC03234



DSC03235





DSC03236



DSC03237



DSC03238



DSC03239





DSC03240



DSC03241



DSC03242



DSC03243



DSC03244



DSC03245



DSC03246



DSC03247





DSC03248



DSC03249



DSC00931



DSC00932





DSC00933



DSC00934



DSC00935



<http://reliantfire.com/>



An Oshkosh Corporation Company