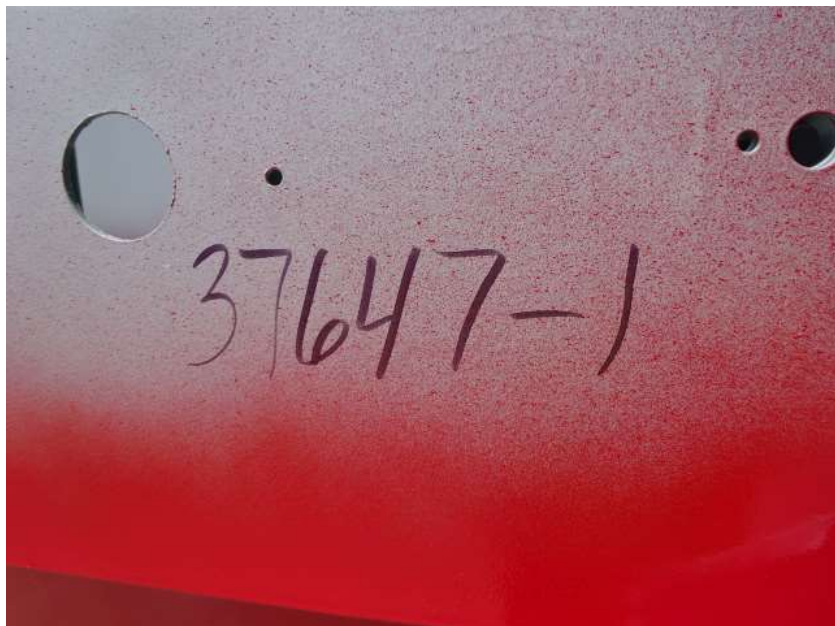


Photo Album for Racine Fire Department, WI Job 37647-01 June 02, 2023

In this report your cab continued the paint process, the pump house began initial assembly, and the body completed fabrication and was staged. In the next report your cab may continue through paint, the pump house may continue initial assembly, and the body may release to paint.



DSC04679



DSC04680



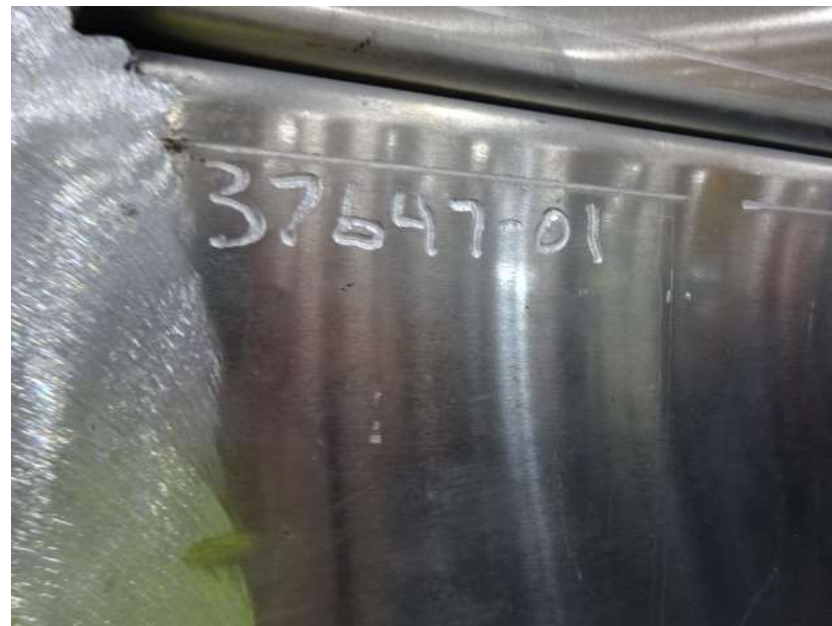
DSC04681



DSC04682



DSC04683



DSC04590



DSC04591



DSC04592

PUMPER STRIP SHEET

Description Highlight/Symbol Mark

DA Finish = Blue	Multi-Spec = Orange
Job Skid = Yellow	Natural Finish = NF

Only fill in appropriate boxes

Job # 37647-01 Fixture: 4

Description	Job Color	Qty.	Clock #	Strip	MF	Hang	Un-Hang	Clock #	Description
1. Access Panels (compartments)		3							30. Sliding Tray
2. Air Bag Rack									31. Sliding Tray Arms w/Arg
3. Air Bottle Compartments*									32. Sliding Tray Brkts
4. Blisters									33. Tilt Tray
5. Chute, Oil Dry Hopper									34. Tilt Tray Mtg (PUC Chp)
6. Tube, Oil Dry Hopper									35. Slides
7. Oil Dry Hopper									36. Tool Board
8. Cover Hydraulic Rack Actuator									37. Tool Board App
9. Door Caps		2							38. Tool Board Top Guide
10. False Blvd									39. Tool Board Trac
11. False Comp. Wall									40. Thru Wall Doors

DSC04558



DSC04559



DSC04560



DSC04561



DSC04562



<http://reliantfire.com/>



An Oshkosh Corporation Company



Your Vision to Quality & Safety

©2005- 2023 Fire & Safety Consulting, LLC
Neenah, Wisconsin 54956