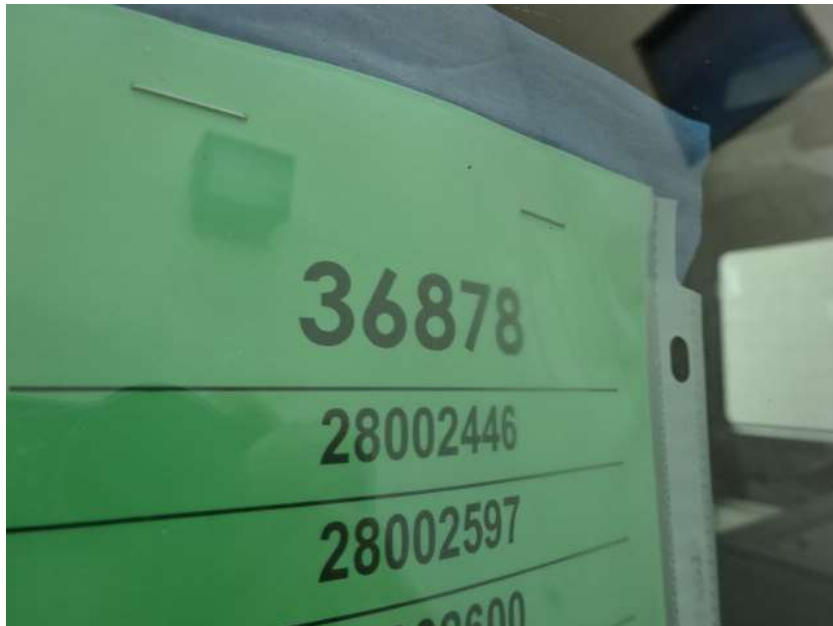


The background of the slide is a collage of four images related to fire departments. Top left: A firefighter in full gear, including a helmet and jacket, is shown from the chest up. Top right: A red fire truck with 'FIRE-RESCUE' written on its side. Bottom left: A red fire truck with 'SULLIVAN' and 'FIRE-RESCUE' on its side. Bottom right: Firefighters in yellow gear are fighting a large fire, with a large plume of white smoke and bright orange flames visible.

Photo Album for Sullivan Fire Department, WI Job 36878 September 30, 2022

In this report chassis assembly continued, the pump house started paint, and the body continued initial assembly. In the next report the chassis may continue assembly, the pump house may continue in paint, and the body may be staged.



DSC05339



DSC05340



DSC05341



DSC05342



DSC05343



DSC05344



DSC05345



DSC05346



DSC05347



DSC05348



DSC05349



DSC05350



DSC05351



DSC05352



DSC05353



DSC05354



DSC05355



DSC05356



DSC05357



DSC07071



DSC07072



DSC07073



DSC07074



DSC07075



DSC05168



DSC05169



DSC05170



DSC05171



DSC05172



<http://reliantfire.com/>



An Oshkosh Corporation Company



Your Vision to Quality & Safety

©2005- 2022 Fire & Safety Consulting, LLC
Neenah, Wisconsin 54956