The background is a collage of four images related to firefighting. Top left: A close-up of a firefighter's gloved hand holding a white fire hose. Top right: A red fire truck with 'FIRE-RESCUE' written on its side. Bottom left: A red fire truck with 'POMPER' visible on its side. Bottom right: Firefighters in yellow gear fighting a large fire with a high-pressure hose.

# Photo Album for Barnum, IA Job # 36676 W/O # 27776600 July 30, 2022

This week your new Pierce Pumper began final assembly after the pump house and body were mounted. Next week your truck should continue with final assembly and installation of option content.

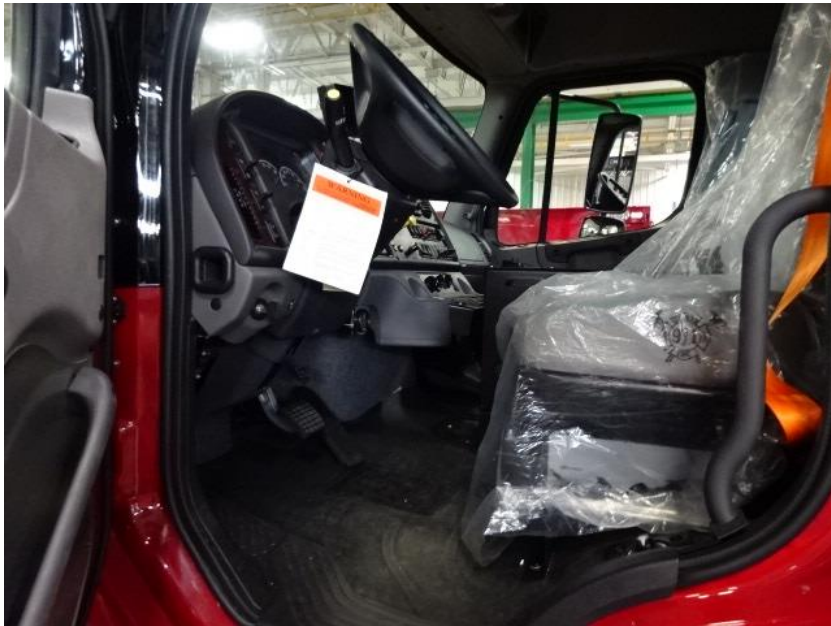




DSC00379



DSC00380



DSC00381



DSC00382





DSC00383



DSC00384



DSC00385



DSC00386





DSC00387



DSC00388



DSC00389



DSC00390





DSC00391



DSC00392



DSC00393





<http://reliantfire.com/>



An Oshkosh Corporation Company



*Your Vision to Quality & Safety*

© 2005-2022 Fire & Safety Consulting, LLC  
Neenah, Wisconsin 54956