



Photo Album for McFarland Fire and Rescue, WI Job 36382 April 08, 2022

In this report your cab completed initial assembly, the frame build continued, the front body completed initial assembly, the rear body completed paint, and the torque box and the aerial device sections remain staged with no photos. In your next report the cab and front body module may be merged with the frame, while the rear body, torque box and aerial device are staged with no photos until assembly begins.



DSC04650



DSC04651



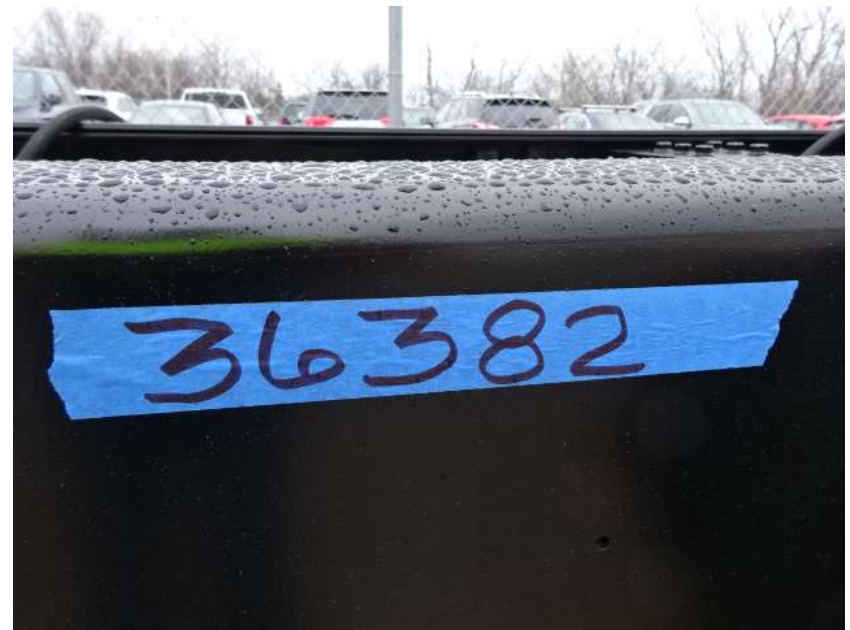
DSC04652



DSC04653



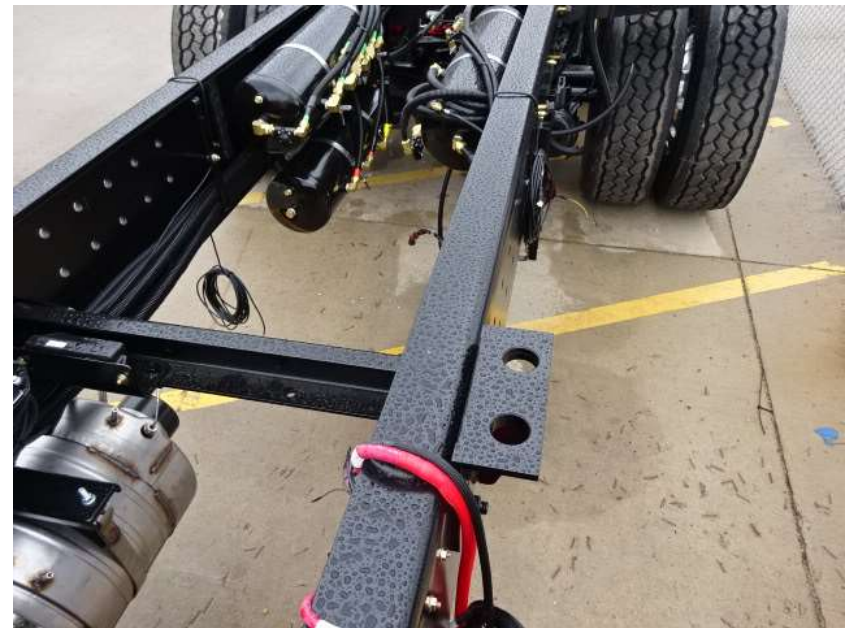
DSC04654



DSC04871



DSC04872



DSC04873



DSC04874



DSC04875



DSC04876



DSC04570



DSC04571



DSC04572



DSC04543



DSC04544



DSC04545



DSC04546



DSC04547



<http://reliantfire.com/>



An Oshkosh Corporation Company



Your Vision to Quality & Safety

©2005- 2022 Fire & Safety Consulting, LLC
Neenah, Wisconsin 54956