

# Photo Album for Raymond Fire & Rescue, WI Job 36172 January 07, 2022

In this report the cab, pump house, and body were merged with the frame. In your next report the apparatus may begin final assembly.





DSC01536



DSC01537



DSC01538



DSC01539



DSC01540



DSC01541



DSC01542



DSC01543



DSC01544



DSC01545



DSC01546



DSC01547



DSC01548



DSC01549



DSC01550



DSC01551



DSC01552



DSC01553



DSC01554



DSC01555



DSC01556



DSC01557



DSC01558



DSC01559



DSC01560



DSC01561



DSC01562



DSC01563

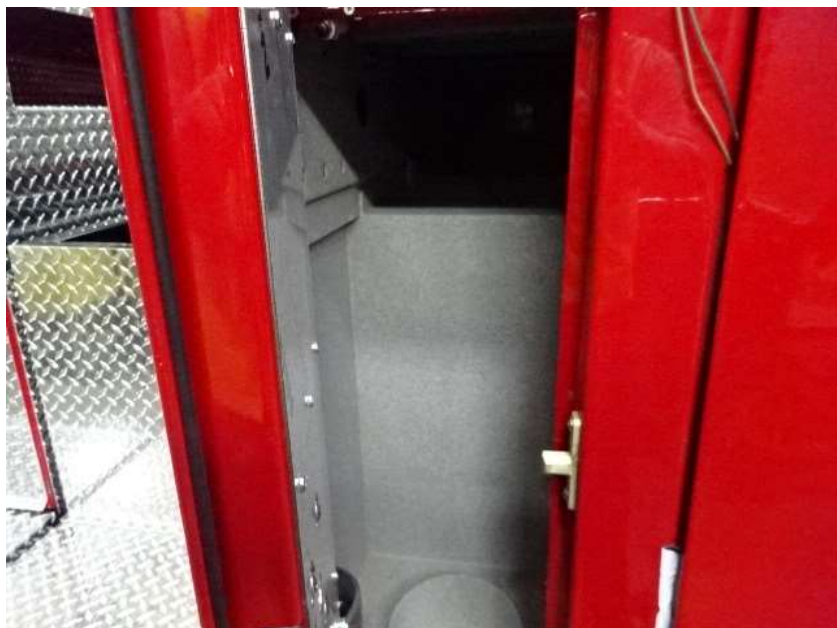




DSC01564



DSC01565



DSC01566



DSC01567



DSC01568



DSC01569



DSC01570



DSC01571



DSC01572



DSC01573



DSC01574



DSC01575



DSC01576



DSC01577



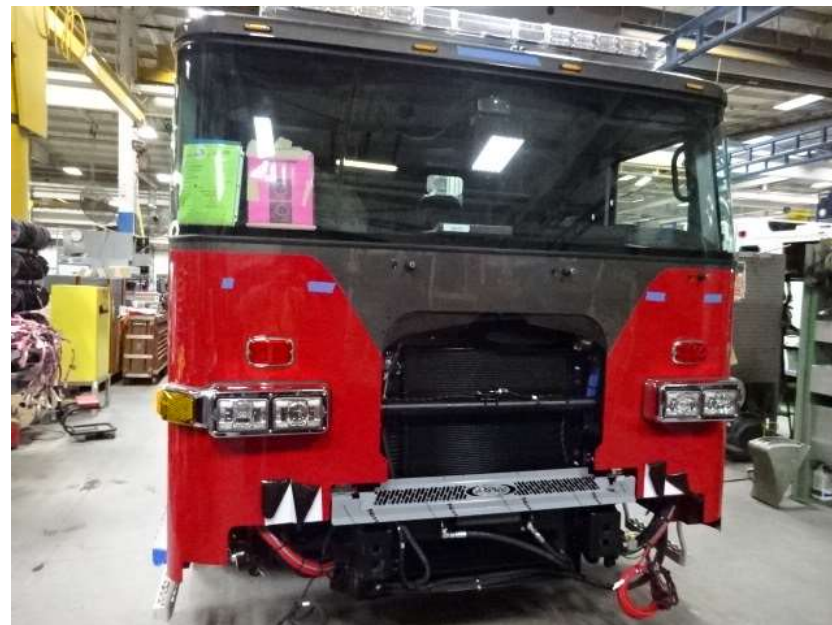
DSC01578



DSC01579



DSC01580



DSC01581



<http://reliantfire.com/>



An Oshkosh Corporation Company



*Your Vision to Quality & Safety*

