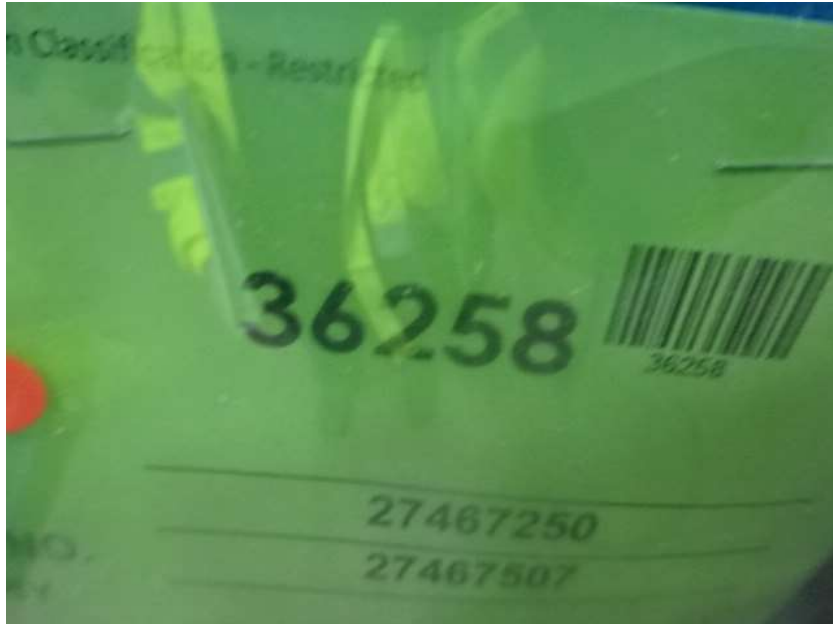




Photo Album for Ames, IA Job 36258 January 21, 2022

In this report your cab and pump house were merged with the chassis, and the body and aerial device are staged. In addition, the torque box has begun assembly. In your next report the chassis may continue assembly followed by installation of the torque box while the body may begin initial assembly and the aerial device remains staged.



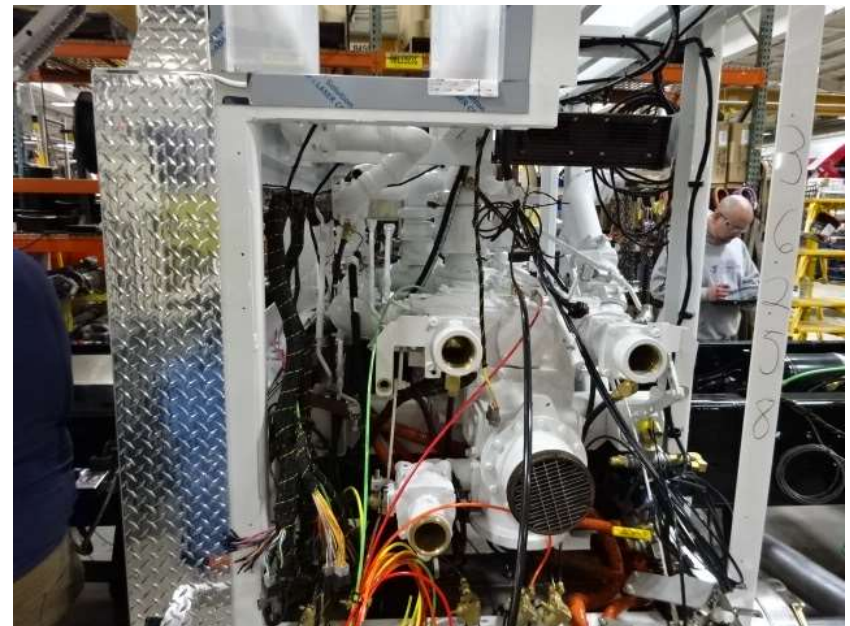
DSC04730



DSC04731



DSC04732



DSC04733



DSC04734



DSC04735



DSC04736



DSC04737



DSC04738



DSC04739



DSC04740



DSC04741



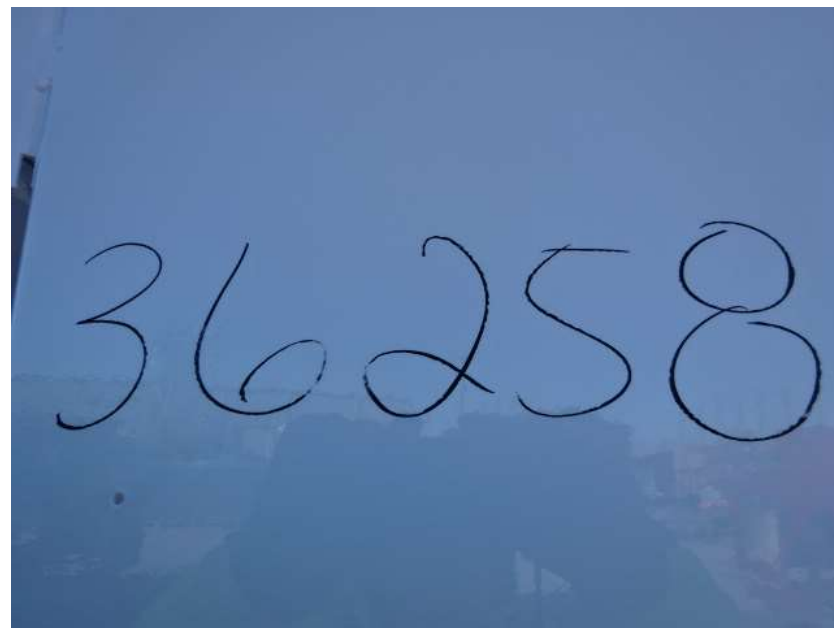
DSC00194



DSC00195



DSC00196



DSC01116



DSC01117



DSC01118



DSC01119



DSC01120



DSC00155



DSC00156



<http://reliantfire.com/>



An Oshkosh Corporation Company



Your Vision to Quality & Safety

