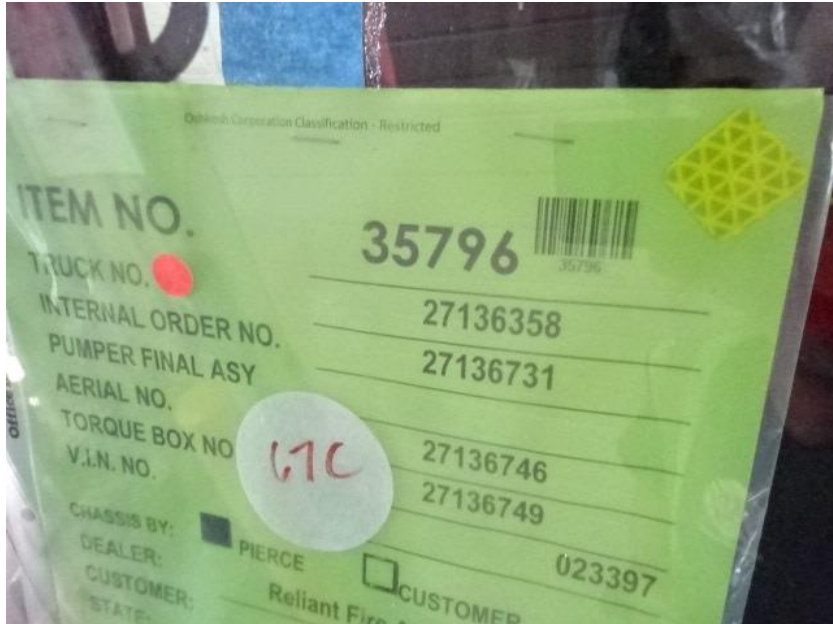




# Photo Album for City of Waukesha Fire Department, WI Job 35796 September 10, 2021

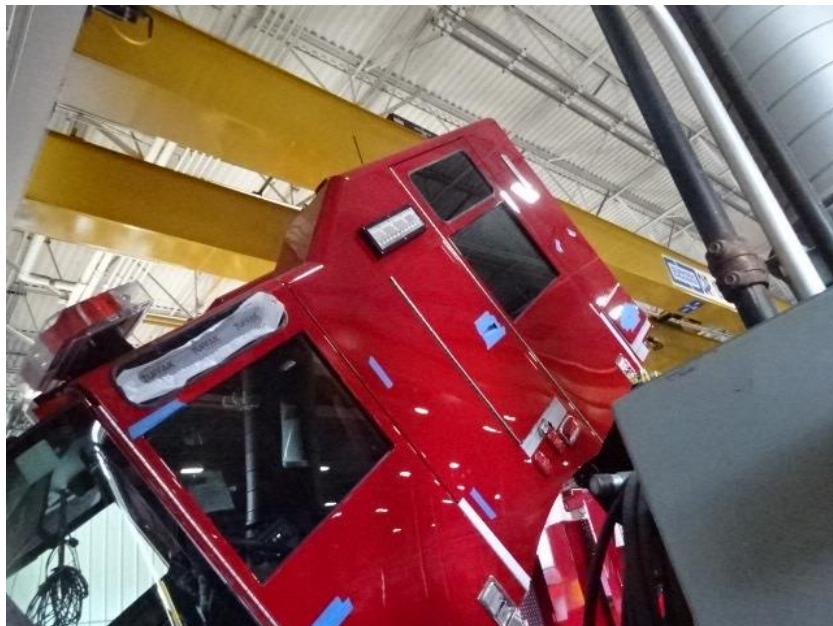
In this report your forward body module was merged with the chassis and the torque box was being installed while the aerial device is staged. In addition, the rear body continued assembly. In the next report the rear body may be merged with the chassis while the aerial device remains staged.



DSC00282



DSC00283



DSC00284



DSC00285



DSC00286



DSC00287



DSC00288



DSC00289



DSC00290



DSC00291



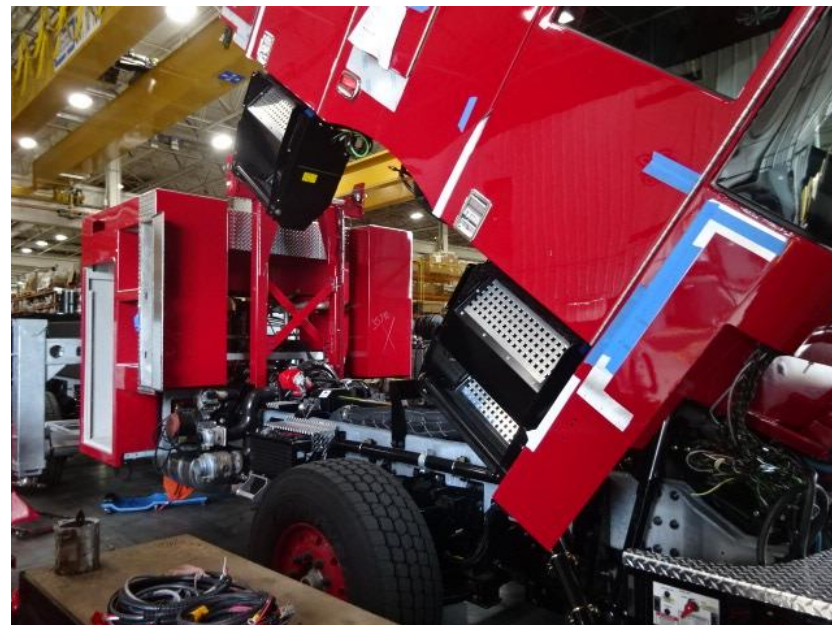
DSC00292



DSC00293



DSC00294



DSC00295



DSC01461



DSC01462



DSC01463



DSC01464



DSC01465



DSC01466



DSC00082



DSC00083



<http://reliantfire.com/>



An Oshkosh Corporation Company



*Your Vision to Quality & Safety*

©2005- 2021 Fire & Safety Consulting, LLC  
Neenah, Wisconsin 54956