



# Photo Album for Stanwood Fire Dept., IA

Job # 35507

W/O # 26831113

May 15, 2021

Your new Pierce apparatus is now in production at the Bradenton, FL facility. This week the chassis arrived, and the pump house structure began fabrication. The fire pump arrived, and the body began fabrication. Next week the chassis should be in staging and the pump house structure should finish with fabrication. The fire pump may begin to receive valves and plumbing, and the body should continue with fabrication.





DSC00009



DSC00010



DSC00011



DSC00012





DSC00013



DSC00014



DSC00015



DSC00016



DSC00017



DSC00018



DSC00019



DSC00020





DSC00021



DSC00022



DSC00023



DSC00024





DSC00025



DSC00026



DSC00027



DSC00028

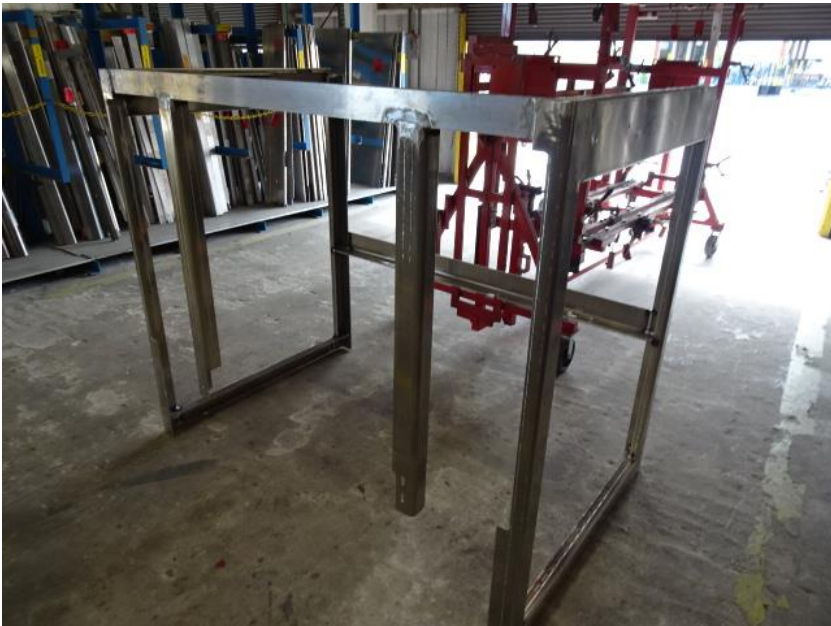




DSC00066



DSC00067



DSC00068



DSC00069





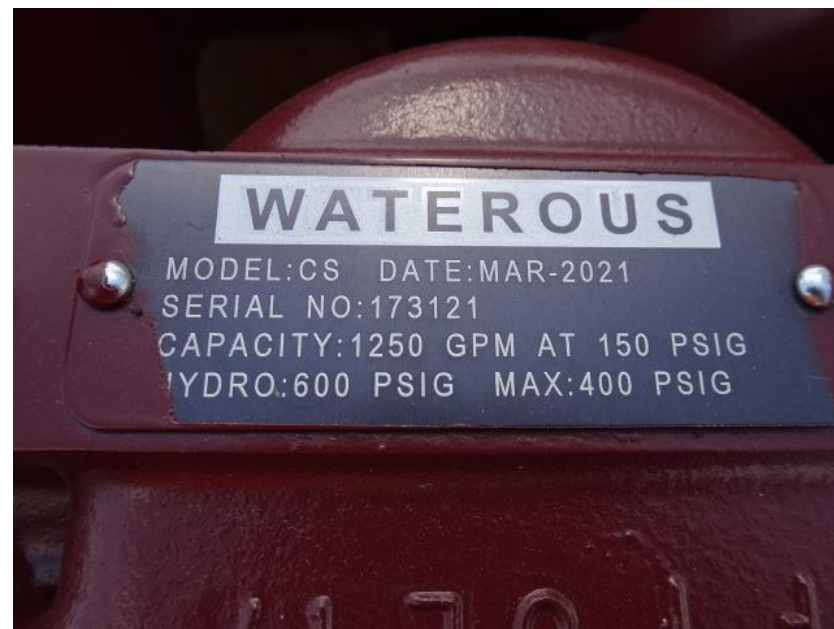
DSC00070



DSC00071



DSC00072



DSC00073

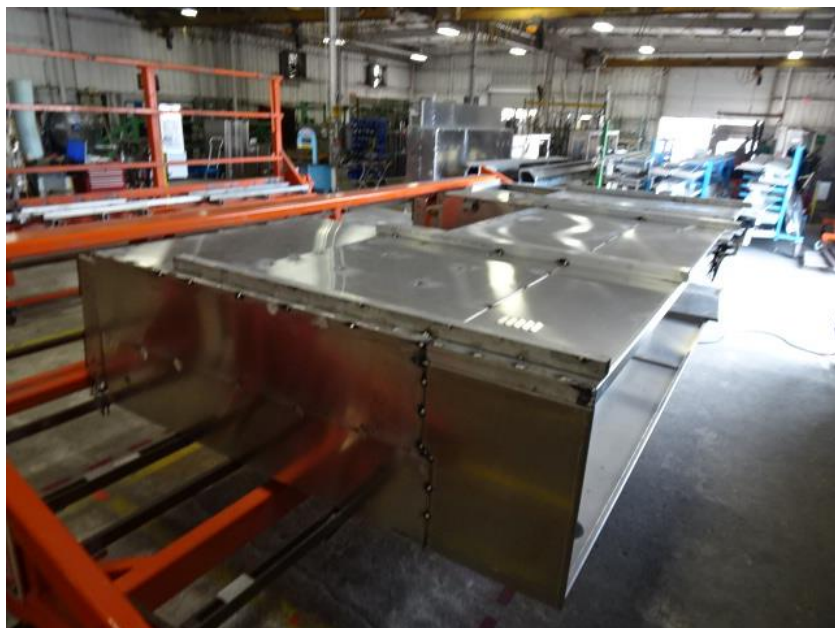




DSC00074



DSC00075



DSC00076



DSC00077





DSC00078





<http://reliantfire.com/>



An Oshkosh Corporation Company



*Your Vision to Quality & Safety*

© 2005-2021 Fire & Safety Consulting, LLC  
Neenah, Wisconsin 54956