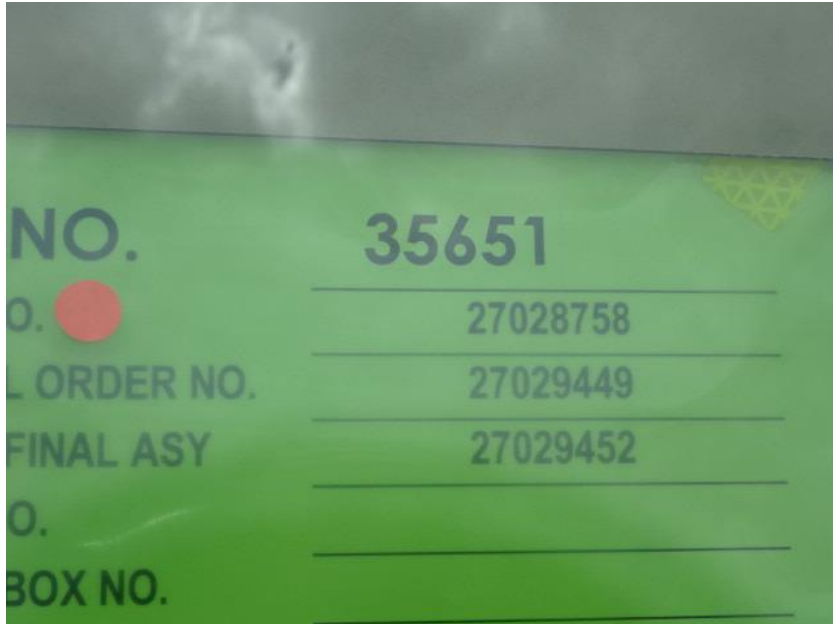


Photo Album for Hudson Fire Department, IA Job 35651 May 07, 2021

In this report your cab and pump house were merged with the chassis while the body has started initial assembly. In your next report your chassis may continue assembly and the body may be merged with the chassis.



DSC05153



DSC05154



DSC05155



DSC05156



DSC05157



DSC05158



DSC05159



DSC05160



DSC05161



DSC05162



DSC05163



DSC05164



DSC05165



DSC05166



DSC05167



DSC05168



DSC05169



DSC05170



DSC05171



DSC05172



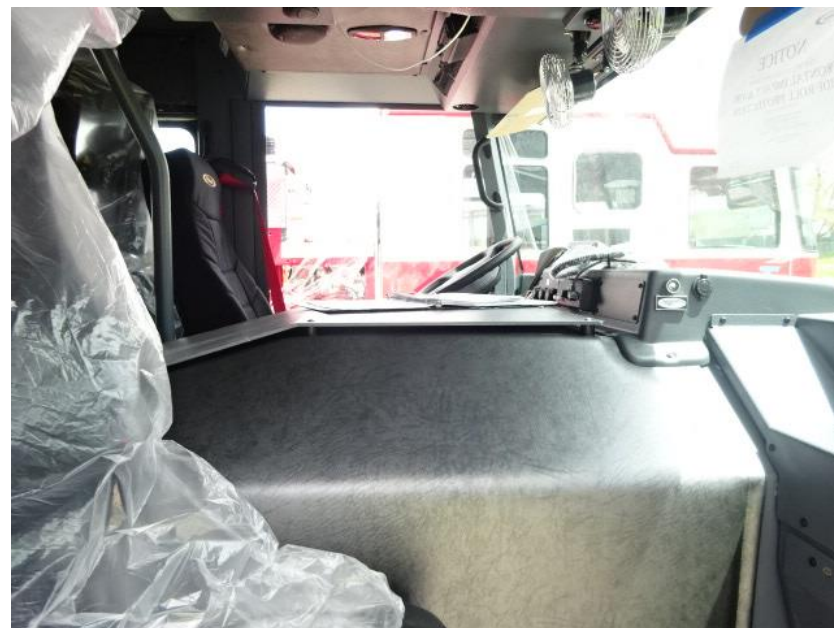
DSC05173



DSC05174



DSC05175



DSC05176



DSC05177



DSC05178



DSC05179



DSC05180



DSC02168



DSC02169



DSC02170



DSC02171



DSC02172



DSC02173



DSC02174



<http://reliantfire.com/>



An Oshkosh Corporation Company



Your Vision to Quality & Safety

©2005- 2021 Fire & Safety Consulting, LLC
Neenah, Wisconsin 54956