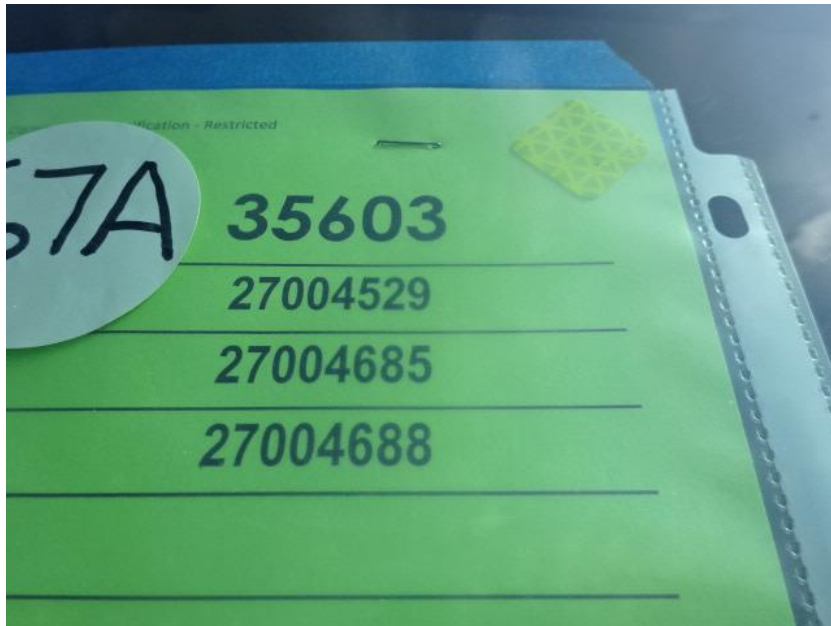


Photo Album for Waterloo Fire Rescue, IA Job 35603 April 23, 2021

In this report your cab was merged with the frame while the pump house is in paint, and the body was not available. In your next report your chassis may continue assembly while the pump house completes paint, and the body may be available again.



DSC03154



DSC03155



DSC03156



DSC03157



DSC03158



DSC03159



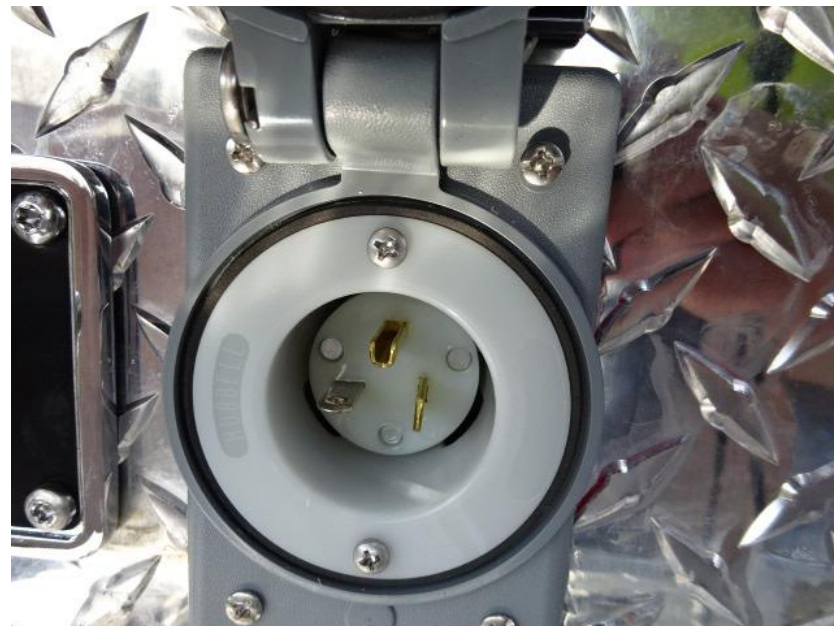
DSC03160



DSC03161



DSC03162



DSC03163



DSC03164



DSC03165



DSC03166



DSC03167



DSC03168



DSC03169



DSC03170



DSC03171



DSC03172



DSC03173



DSC03174



DSC03175



DSC03176



DSC03177



DSC03178



DSC03179



DSC03180



DSC03181



DSC03182



DSC03183



DSC03184



DSC03185



DSC03186



DSC03187



DSC03188



DSC03189



DSC03190



DSC03191



DSC03192



DSC03193



DSC03194



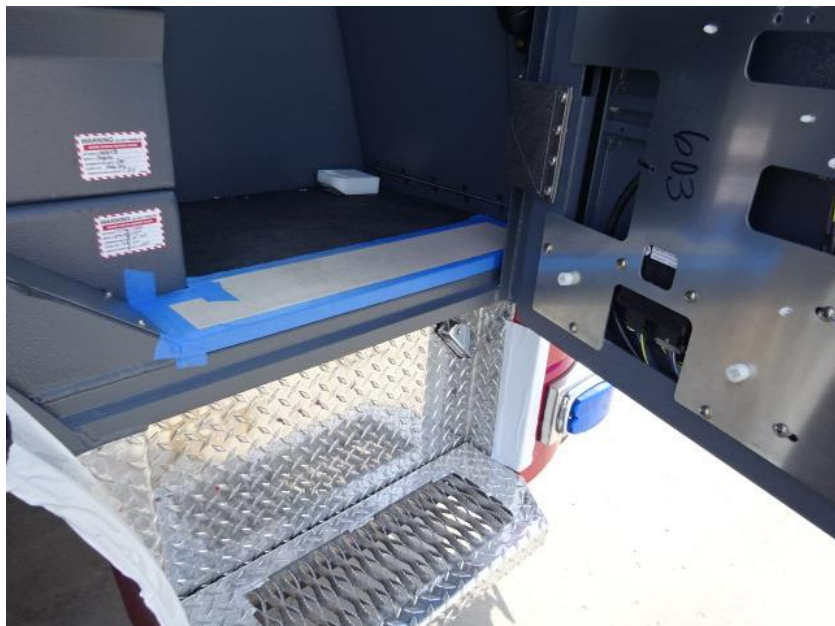
DSC03195



DSC03196



DSC03197



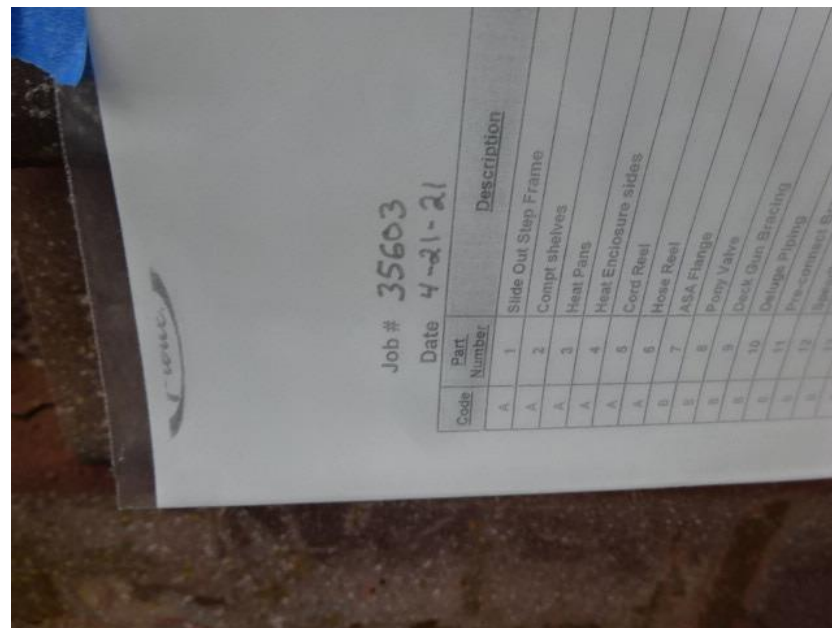
DSC03198



DSC03199



DSC03200



DSC00068



DSC00069



DSC00070



DSC00071



DSC00072



<http://reliantfire.com/>



An Oshkosh Corporation Company



Your Vision to Quality & Safety

©2005- 2021 Fire & Safety Consulting, LLC
Neenah, Wisconsin 54956