

The background of the slide features a collage of fire-related images. On the left, a firefighter in full gear is shown from the chest up, holding a hose. In the center, a firefighter's helmet with the number '42' is visible. On the right, a red fire truck is shown with 'FIRE-RESCUE' written on its side. At the bottom right, there is a scene of firefighters in yellow gear extinguishing a fire with a large stream of water.

# Photo Album for Eldridge Fire Department, IA Job F7334 March 05, 2021

In this report the cab was not available in paint while the chassis is being built, the pump house is released to paint, the body is in paint, the torque box has returned, and the ladder sections are being assembled. In the next report the cab, pump house, and body may make progress in paint while the aerial device continues assembly, and the torque box is staged.

Your next scheduled report from Weyauwega is the week ending March 20, 2021.



DSC09114



DSC09115



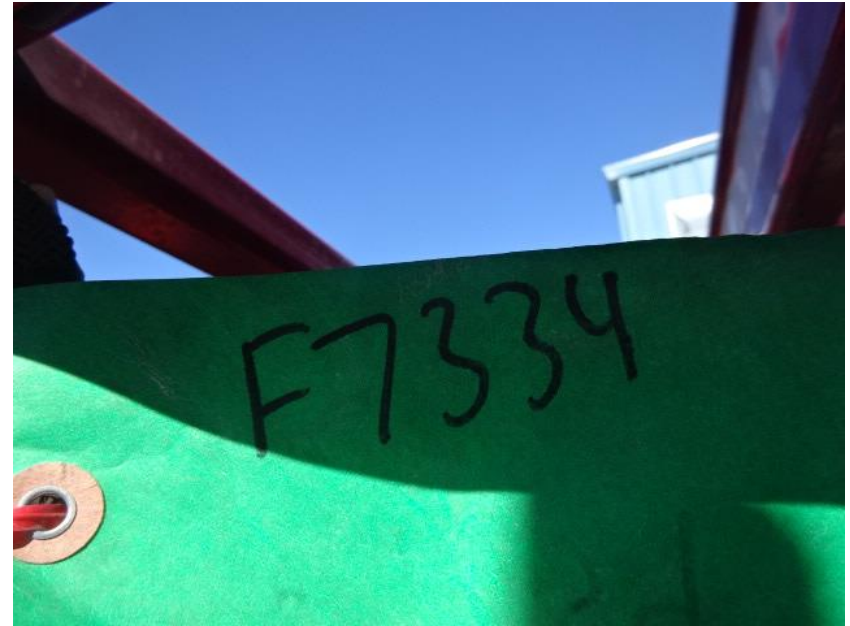
DSC09116



DSC09117



DSC09118



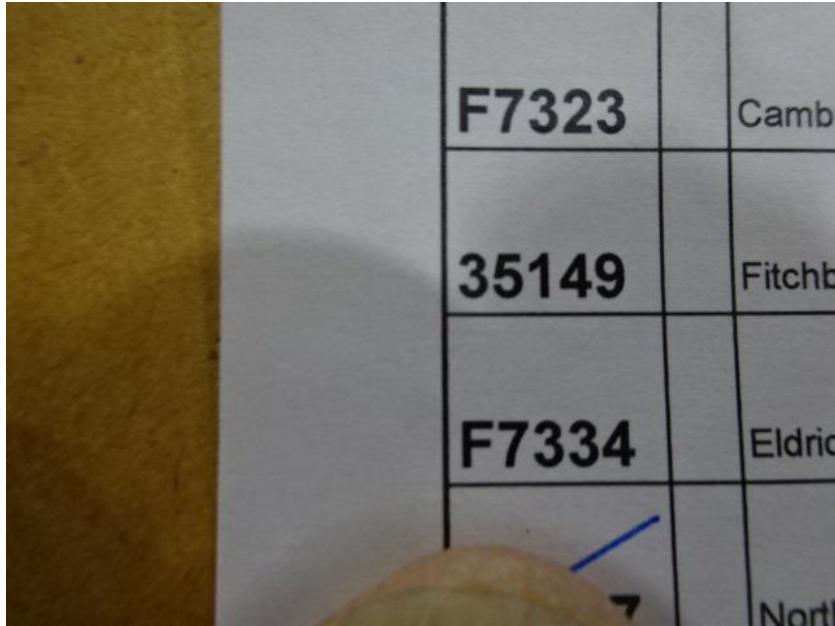
DSC09100



DSC09101



DSC09102



DSC09094



DSC09095



DSC09096



DSC09119



DSC09120



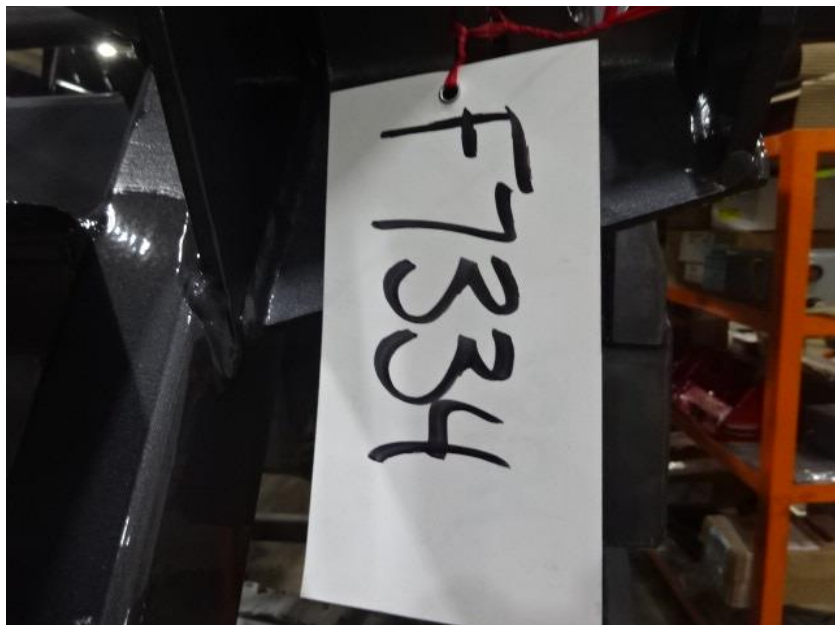
DSC09121



DSC09122



DSC09123



DSC09083



DSC09084



DSC09085



DSC09086



DSC09087



<http://reliantfire.com/>



An Oshkosh Corporation Company



*Your Vision to Quality & Safety*

©2005- 2020 Fire & Safety Consulting, LLC  
Neenah, Wisconsin 54956