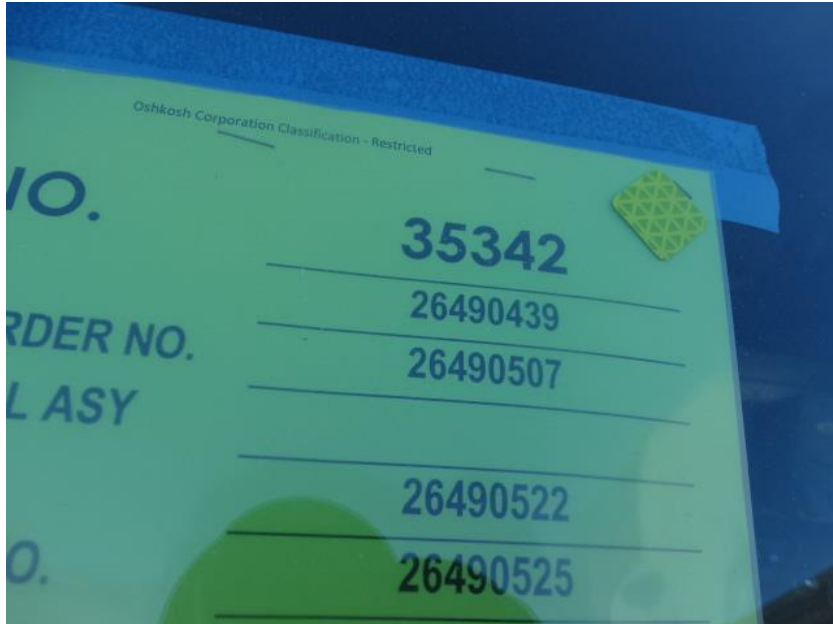


Photo Album for Onalaska Fire Department, WI Job 35342 January 29, 2021

In this report your cab and PUC module were merged with the chassis while the body is staged. In your next report your pedestal may be merged with the chassis while the body may remain staged.



DSC07451



DSC07452



DSC07453



DSC07454



DSC07455



DSC07456



DSC07457



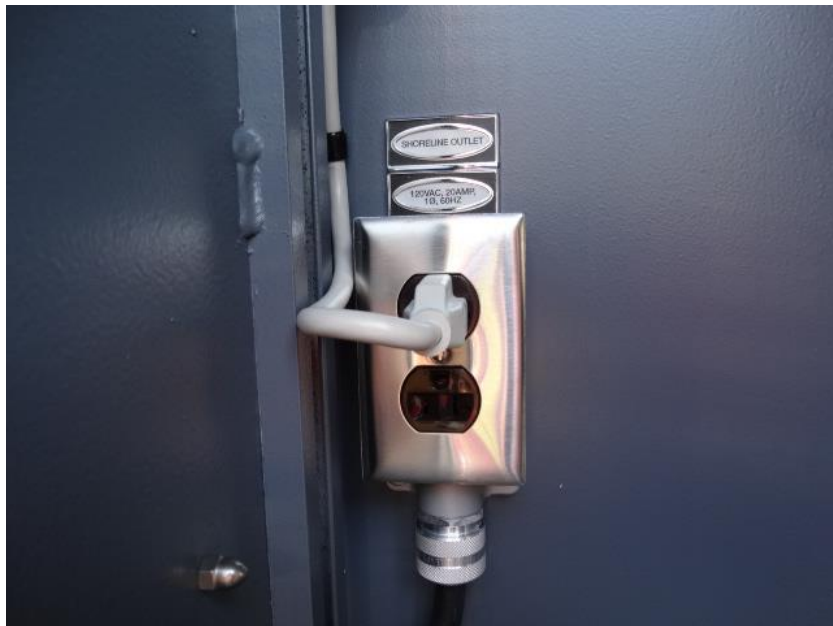
DSC07458



DSC07459



DSC07460



DSC07461



DSC07462



DSC07463



DSC07464



DSC07465



DSC07466



DSC07467



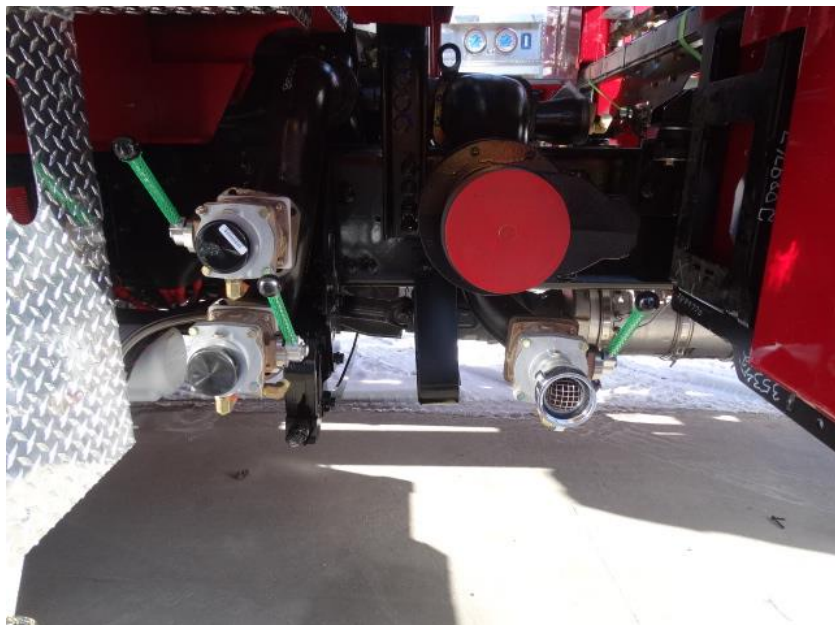
DSC07468



DSC07469



DSC07470



DSC07471



DSC07472



DSC07473



DSC07474



DSC07475



DSC07476



DSC07477



DSC07478



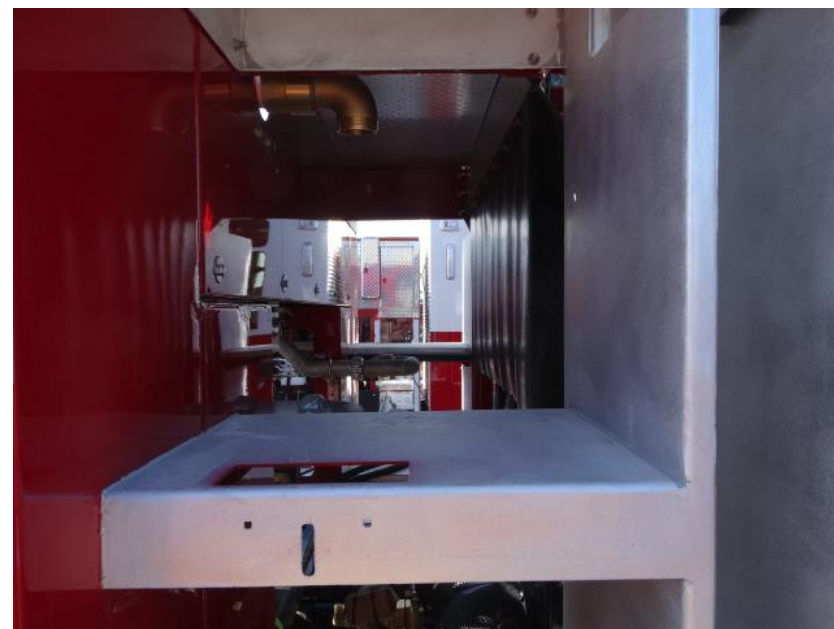
DSC07479



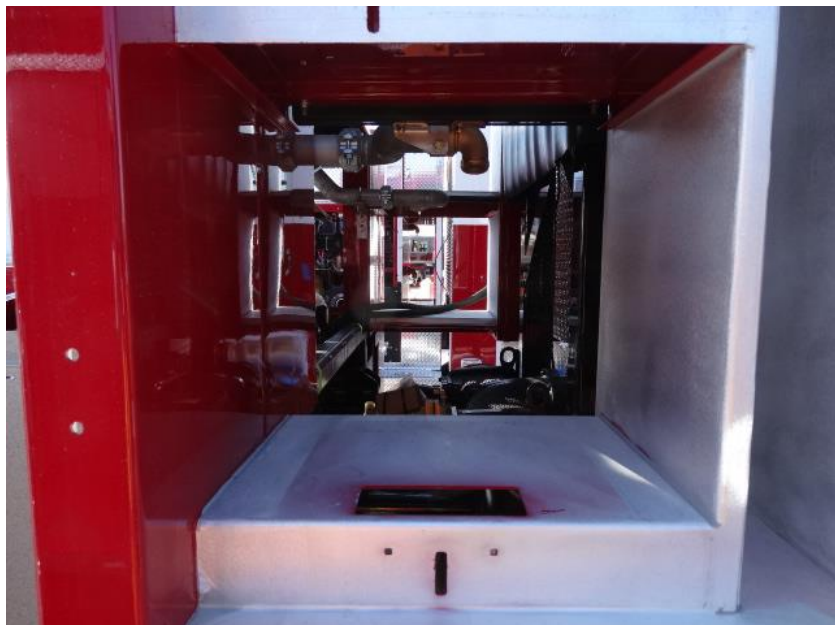
DSC07480



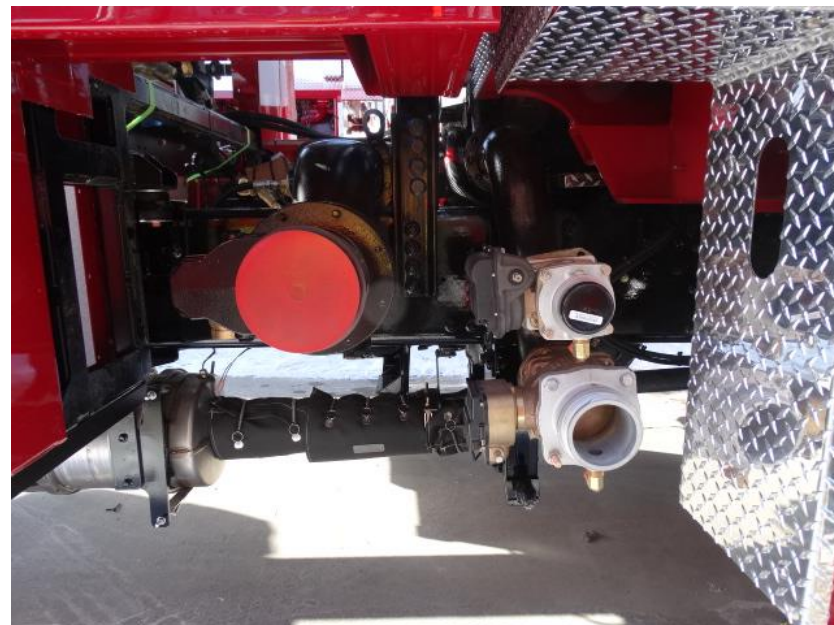
DSC07481



DSC07482



DSC07483



DSC07484



DSC07485



DSC07486



DSC07487



DSC07488



DSC07489



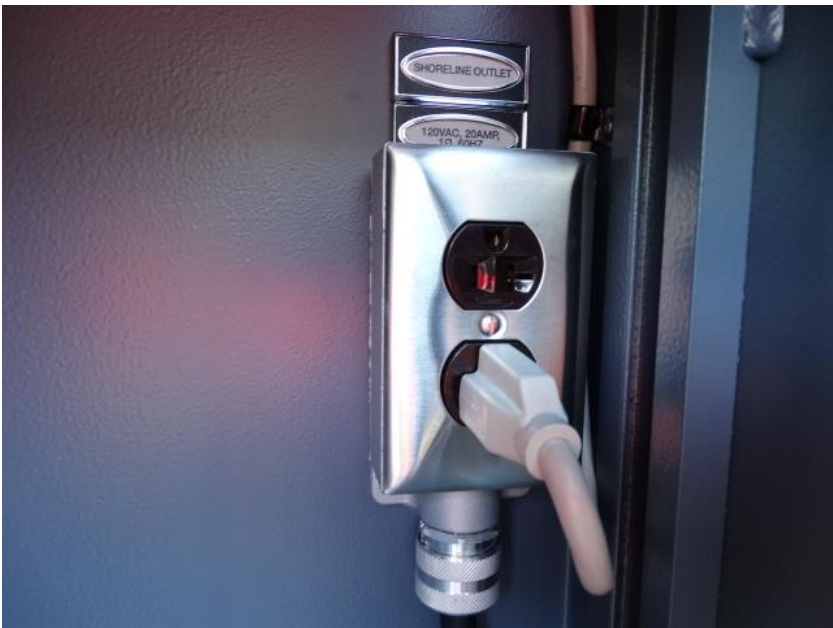
DSC07490



DSC07491



DSC07492



DSC07493



DSC07494



DSC07495



DSC07496



DSC07497



DSC07498



DSC07499



DSC07500



DSC07501



DSC07502



DSC02126



DSC02127



DSC02128



DSC02129



DSC02130



DSC02131



DSC02132



DSC02133



DSC02134



DSC02135



DSC02136



DSC02137



DSC02138



<http://reliantfire.com/>



An Oshkosh Corporation Company



Your Vision to Quality & Safety

©2005- 2021 Fire & Safety Consulting, LLC
Neenah, Wisconsin 54956