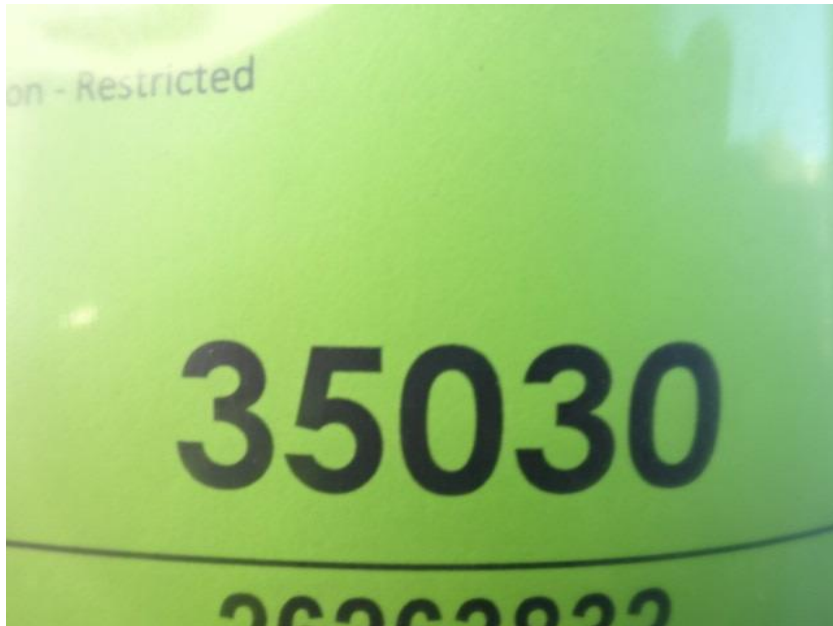


Photo Album for Tess Corners Volunteer Fire Dept., WI Job 35030 January 22, 2021

In this the report the cab and pump house were merged with the chassis, the torque box is in assembly and the rear body module has started initial assembly. In your next report the torque box may be installed on the chassis while the body modules wrap up initial assembly.



DSC00030



DSC00031



DSC00032



DSC00033



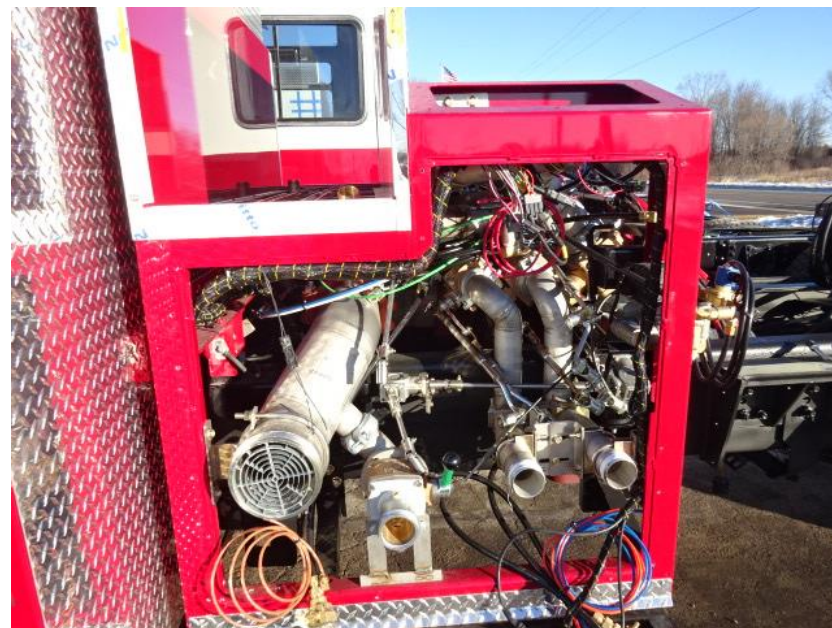
DSC00034



DSC00035



DSC00036



DSC00037



DSC00038



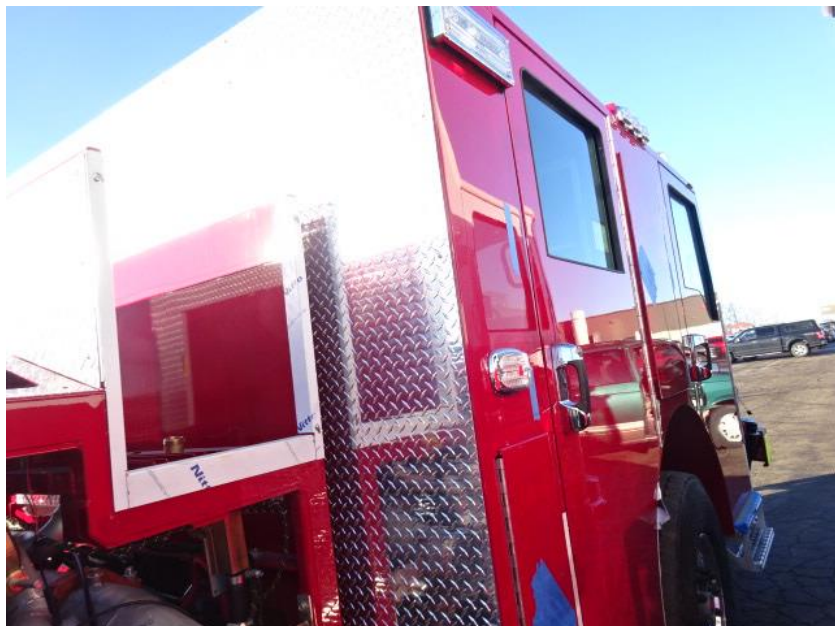
DSC00039



DSC00040



DSC00041



DSC00042



DSC00043



DSC00044



DSC00045



DSC00046



DSC00461



DSC00462



DSC00463



DSC00464



DSC00465



DSC02473



DSC02474



DSC02475



DSC02476



DSC02477



DSC02731



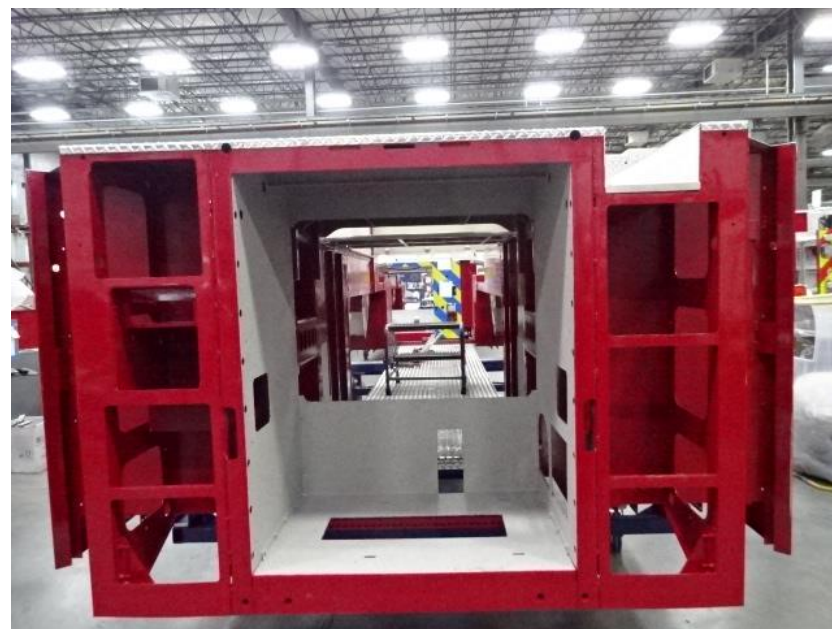
DSC02732



DSC02733



DSC02734



DSC02735



DSC02736



DSC02737



DSC02738



DSC02739



<http://reliantfire.com/>



An Oshkosh Corporation Company



Your Vision to Quality & Safety

©2005- 2021 Fire & Safety Consulting, LLC
Neenah, Wisconsin 54956