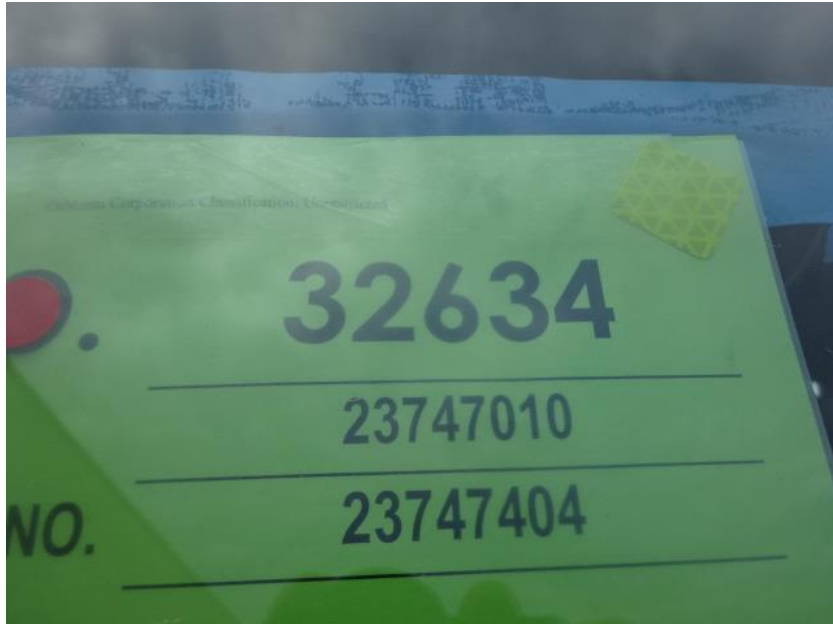


Photo Album for Sherrill IA Job 32634 January 11, 2019

This week your cab and chassis were merged together followed by installation of the body and water tank on the pre-line. In your next report your apparatus should begin on the main assembly line where option content is added in all areas.



DSC08435



DSC08436



DSC08437



DSC08438



DSC08439



DSC08440



DSC08441



DSC08442



DSC08443



DSC08444



DSC08445



DSC08446



DSC08447



DSC08448



DSC08449



DSC08450



DSC08451



DSC08452



DSC08453



DSC08454



DSC08455



DSC08456



DSC08457



DSC08458



DSC08459



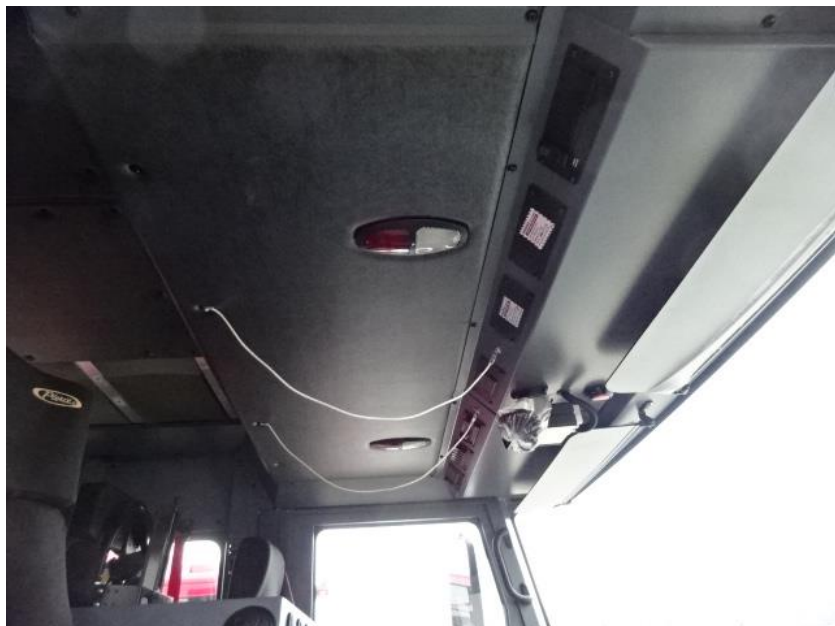
DSC08460



DSC08461



DSC08462



DSC08463



DSC08464



DSC08465



<http://reliantfire.com/>



An Oshkosh Corporation Company



Your Vision to Quality & Safety

© 2005-2018 Fire & Safety Consulting, LLC
Neenah, Wisconsin 54956